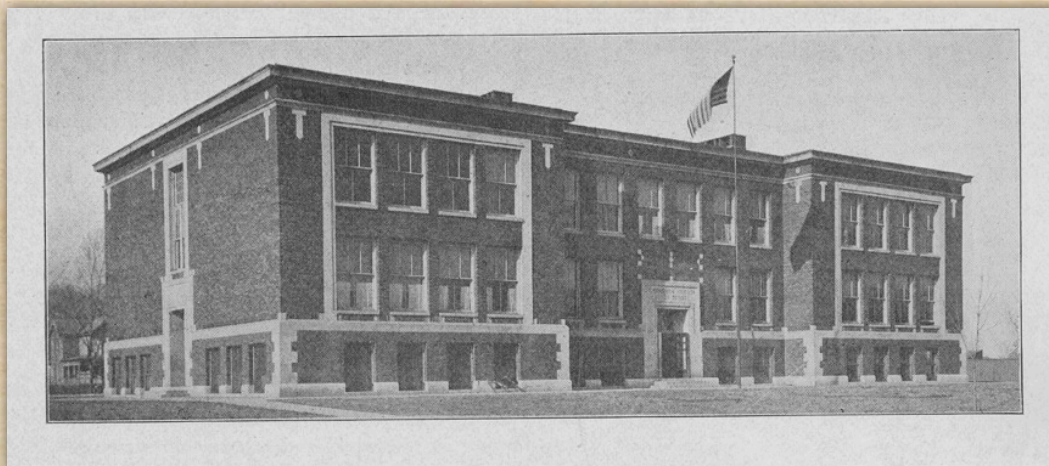




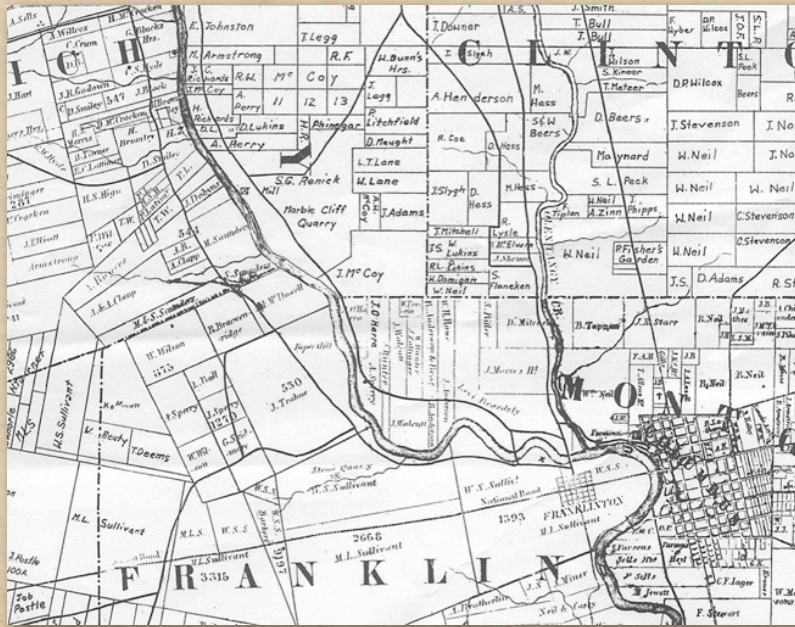
Grandview Heights
Marble Cliff
Historical Society

Thursday, October 20, 11



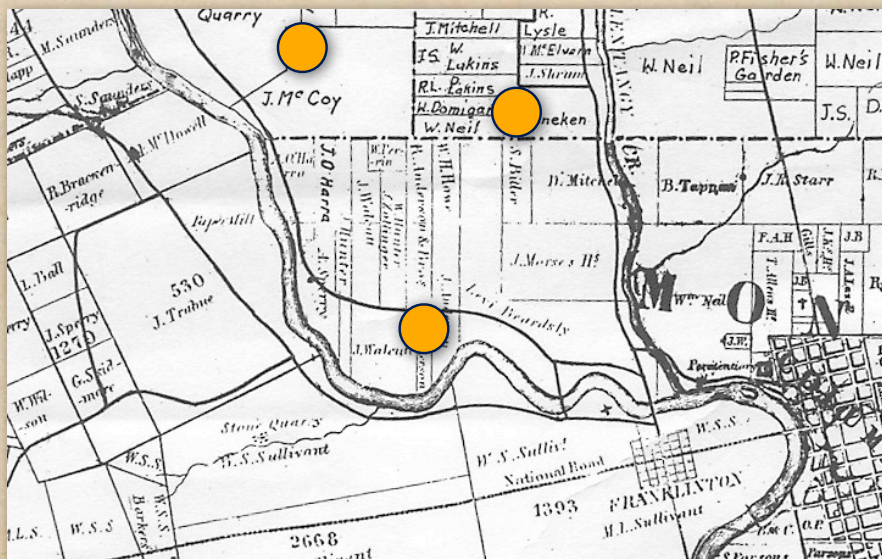
Thursday, October 20, 11

townships



Thursday, October 20, 11

township schools



Thursday, October 20, 11

harding school



Thursday, October 20, 11

harding school

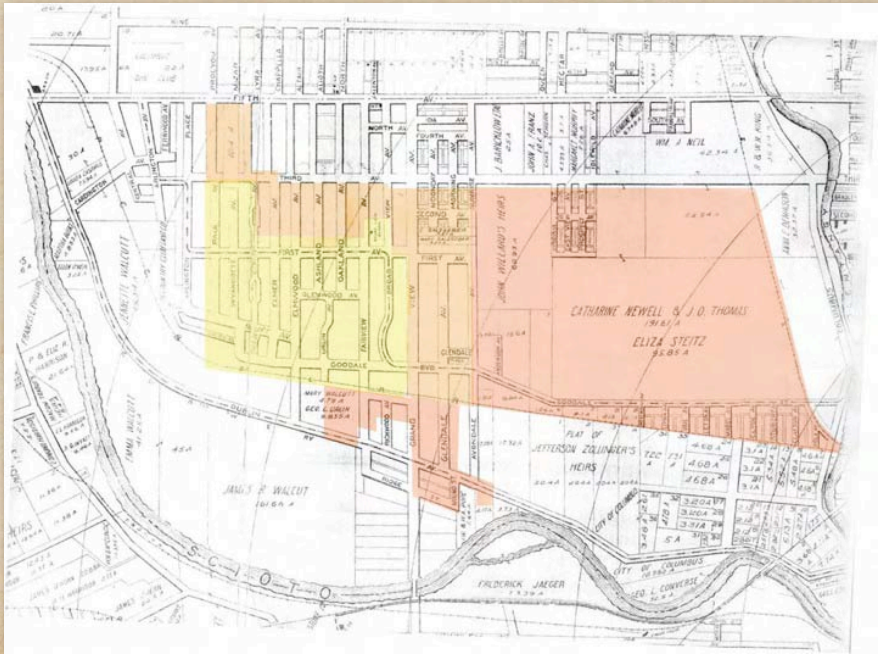


Thursday, October 20, 11

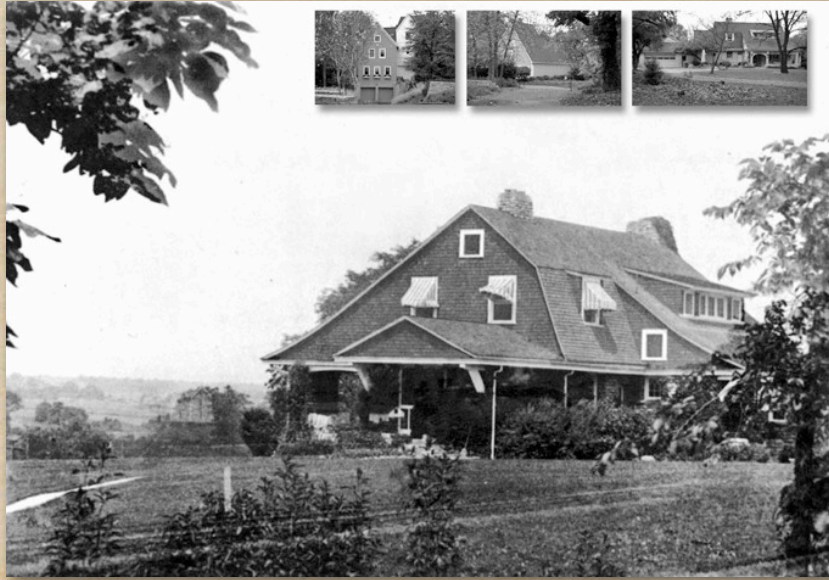


Thursday, October 20, 11

annexations



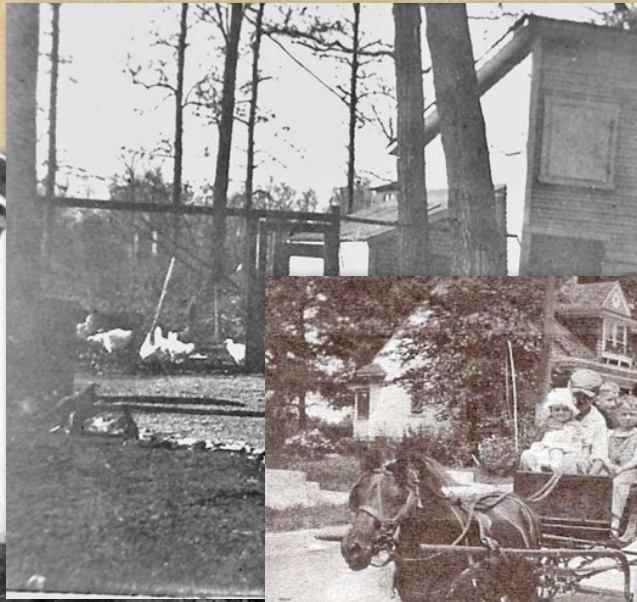
Thursday, October 20, 11



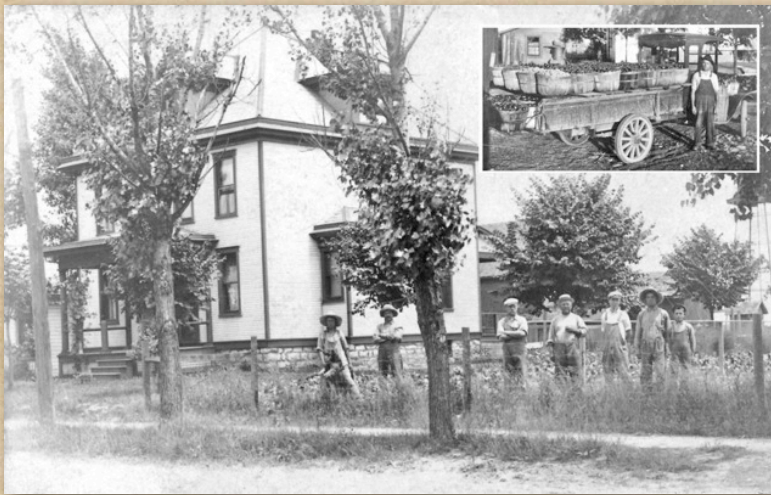
Thursday, October 20, 11



Thursday, October 20, 11



Thursday, October 20, 11



Thursday, October 20, 11

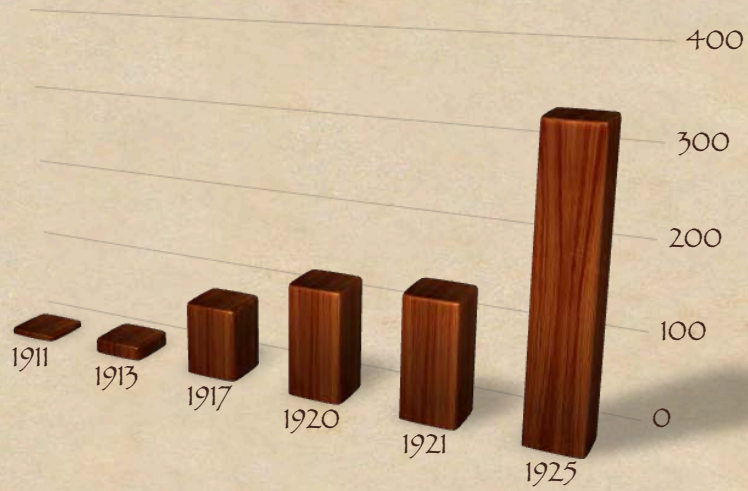


Thursday, October 20, 11



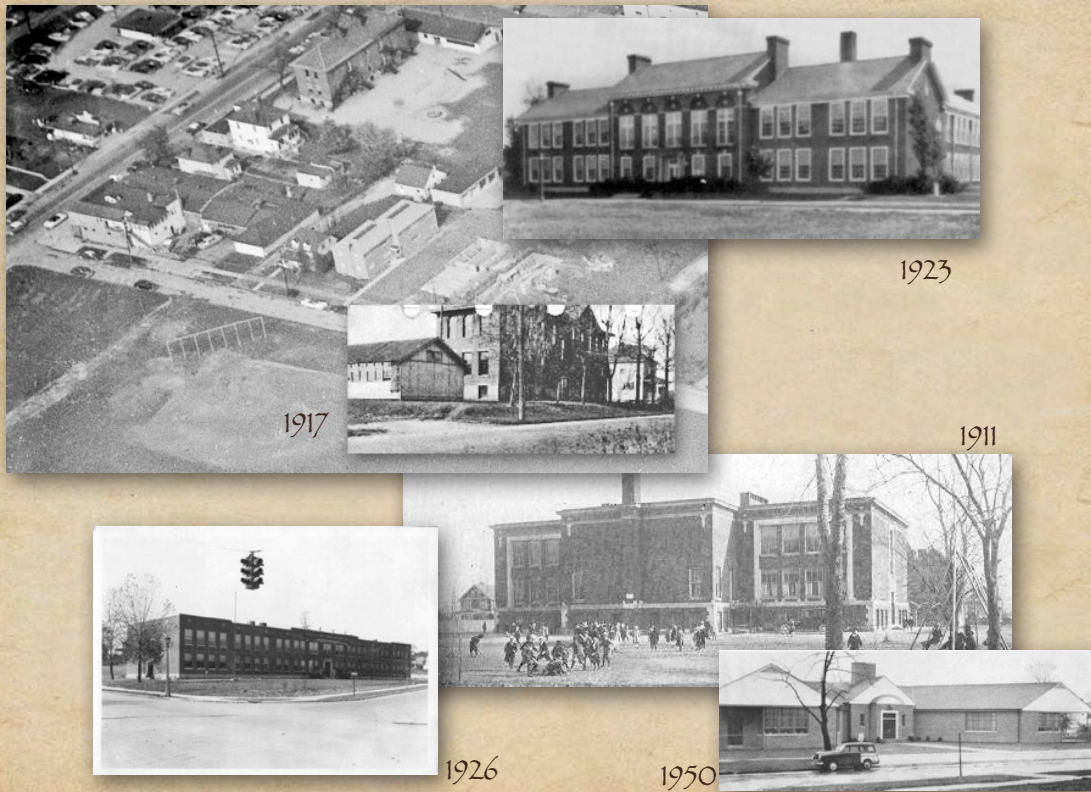
Thursday, October 20, 11

community growth

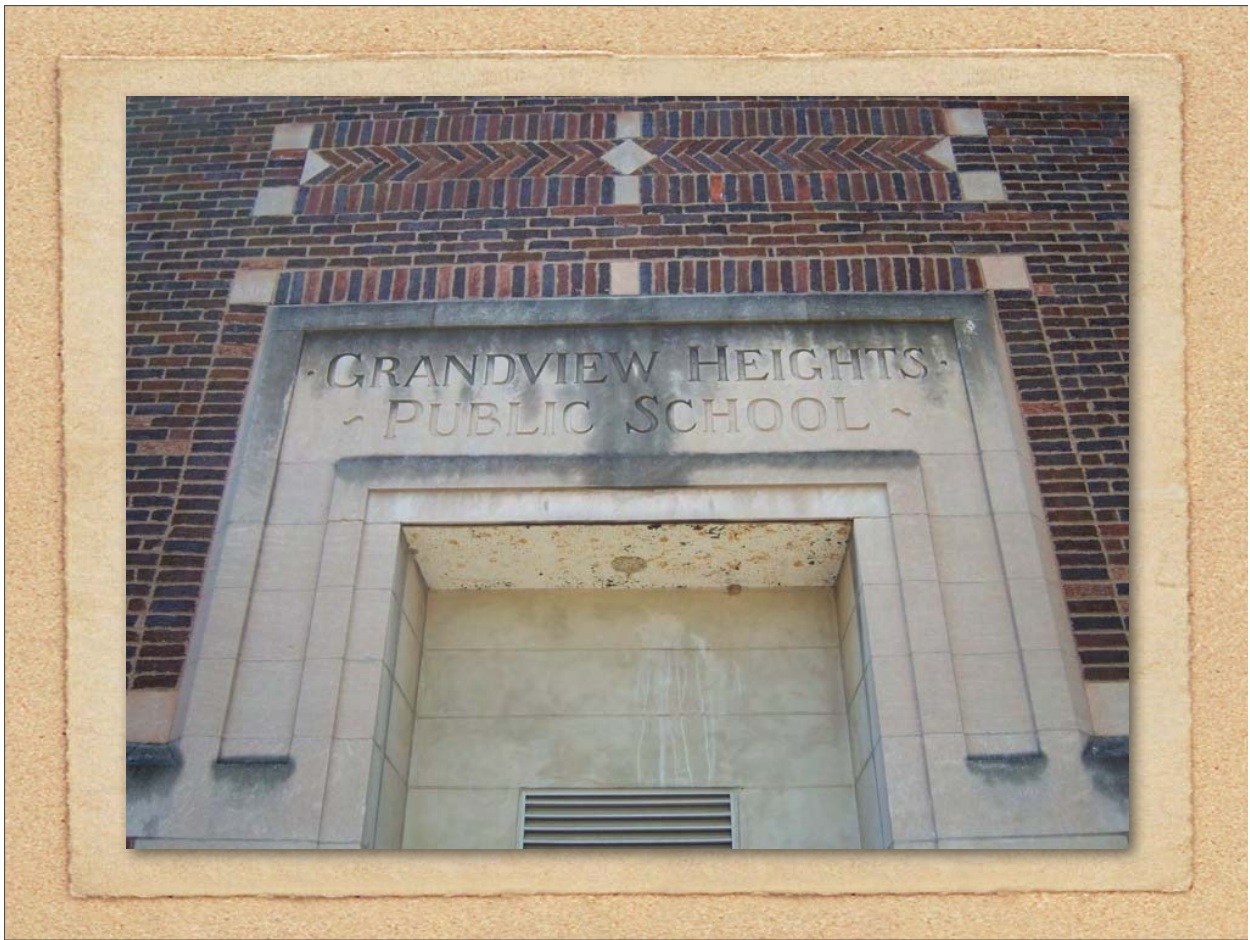


◆ High School census

Thursday, October 20, 11



Thursday, October 20, 11



Thursday, October 20, 11



Thursday, October 20, 11

BOARD OF EDUCATION
 ARMARKEL PRES
 OSCAR AVERY
 C. H. WALCUTT
 P. S. SKEELE
 D. S. FIELD CLERK



Thursday, October 20, 11

Grandview Heights Village School District 1911. 1

ARMARKEL, Pres. Building Fund. 52

1911 E. Elford Reinforced Concrete

Date	Description	Debit	Credit	Balance
May 15 th	Mrs Elizabeth Williamson	165		
" "	Geo E Mayle and Cora L Mayle	145		
June 1 st	Geo C. Walin for R.A. Truax lots	166		
" "	" " " "	167		
" 16	W.H. Tremaine 2 1/2 % (Architect)			
" 22	New 1 st Natl Bank (Klinesman Test)			
July 21	A.W. Schneider. 1 st payment Bldg Contract			
" 25	W.H. Tremaine Superintendant			
Sept 6	C.C. Craft agent for lots 149-150			
" "	The Wittenmeier Stone Co			
" "	A.W. Schneider estimate on c			
" "	W.H. Tremaine Superintendant			
Oct 5 th	W.H. Tremaine "			
" "	Wittenmeier Stone Co. monthly			
" "	A.W. Schneider "			
" "	E. Elford pumping water out cell			
" "	C.C. Craft Real Estate Agent			
" "	D. S. Field, Recording deeds			
Nov 3	W.H. Tremaine Supt Constn			
" "	McMaster Electric Co on acct contract			
" "	E. Elford on acct concrete contract			
" "	The Wittenmeier Stone Co acct contract			
" "	Geo C Walin Lots 146-147-148			
Dec 22	W.H. Tremaine Supt construction			

64

1912

Frank S Hall Co.

Date	Description	Debit	Credit	Balance
Sept 5	Hardware			
	Exp chgs on bills sent to Municipal			
	less 2 %			
	Paid Sept 25, 1912			

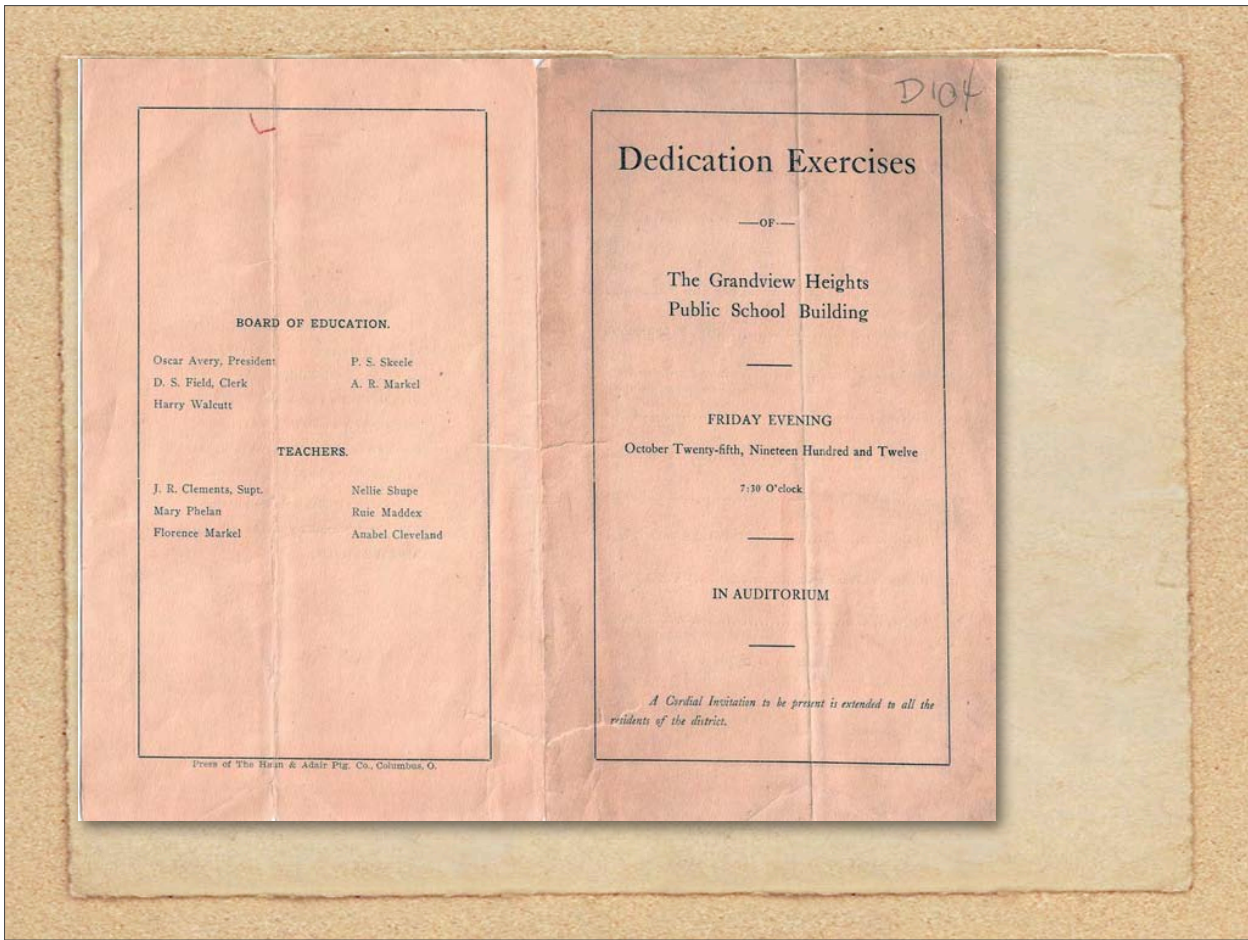
65

1912

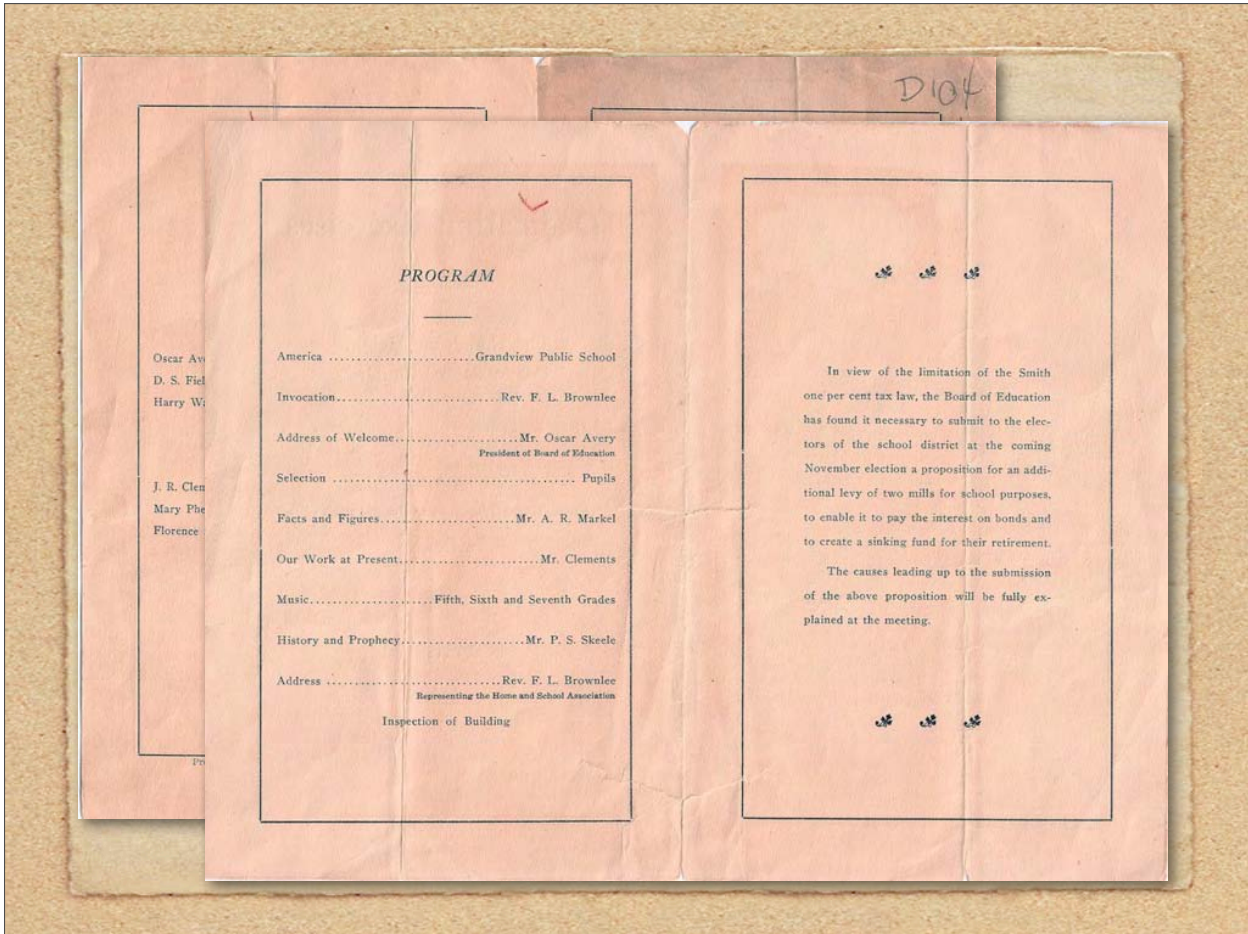
Columbus Brass Co.

Date	Description	Debit	Credit	Balance
Sept 27	paid paper holders 44/10			
	Paid 7/20/12			

Thursday, October 20, 11



Thursday, October 20, 11



Thursday, October 20, 11



Thursday, October 20, 11

skeele speech excerpt

- ◆ "I am hoping that this school building will be the center of many social activities. It is the board's fondest hope that this building, which belongs to the citizens of the entire school district, will be made use of for every legitimate end that may serve our common good."

Thursday, October 20, 11



Thursday, October 20, 11



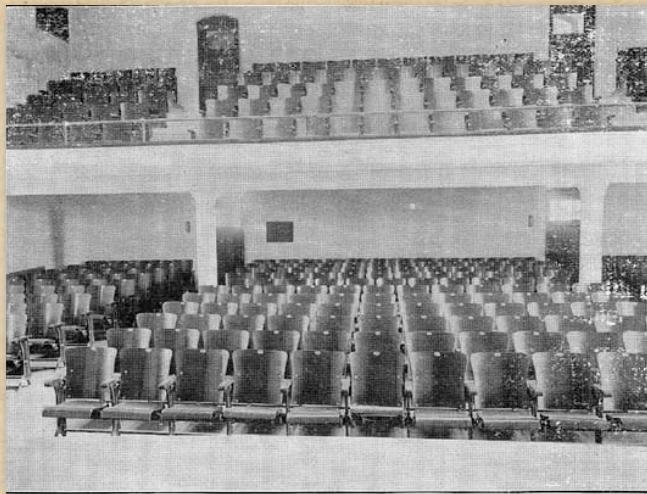
Thursday, October 20, 11



Thursday, October 20, 11

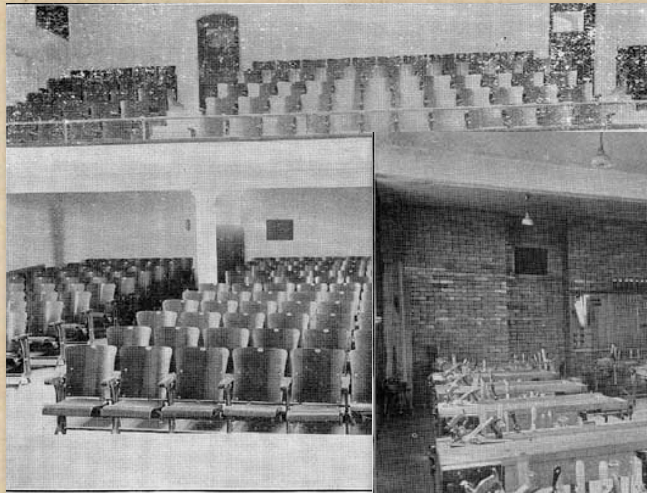


Thursday, October 20, 11

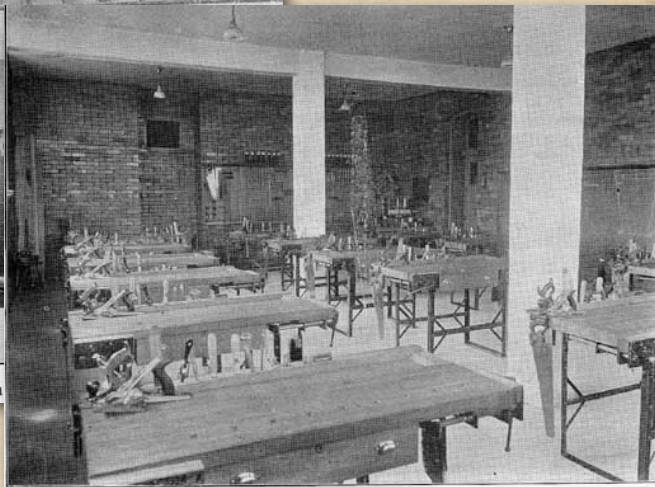


Auditorium

Thursday, October 20, 11

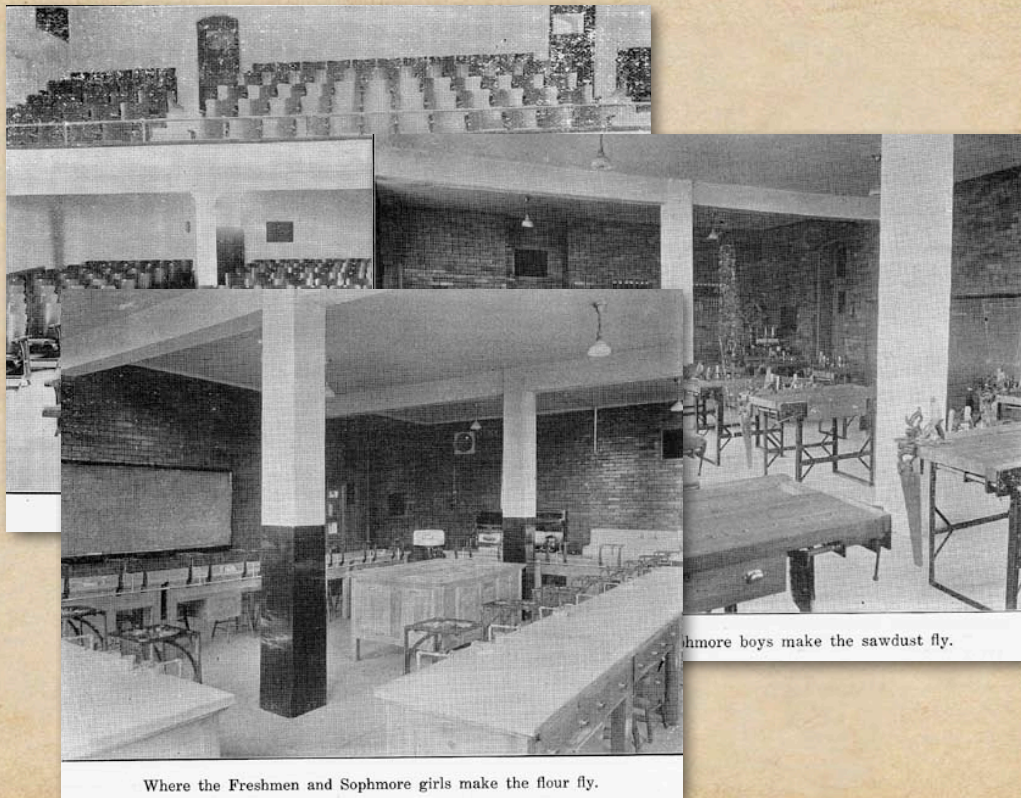


Auditorium



Where the Freshmen and Sophomore boys make the sawdust fly.

Thursday, October 20, 11



Where the Freshmen and Sophomore girls make the flour fly.

More boys make the sawdust fly.

Thursday, October 20, 11

Date.	Number Served.	MENU.	Cost.	Receipts.	Profit.	Loss.
Wed. Oct. 6...	103	Baked Beans with Catsup, Boiled Potatoes, Stewed Tomatoes, Peach and Marshmallow Salad, Peanut Butter Sandwiches, Sugar Roll, Cocoa, Milk...	\$10.18	\$10.24	\$0.06	
Thur. Oct. 7..	106	Irish Stew with Dumplings, Fried Potatoes, Stewed Corn, Salmon Salad, Bean Salad Sandwiches, Cinnamon Flop, Grapes, Cocoa, Milk	10.49	11.80	1.31	
Fri. Oct. 8....	110	Cream of Corn Soup with Crackers, Wiener and Bun with Mustard, Rice and Pimento, String Beans, Potato Salad, Cocoa, Milk, Fruit Pudding, Doughnuts	15.16	20.43	5.27	
Mon. Oct. 11..	100	Baked Hash, Creamed Potatoes, Succotash, Pimento Cheese Sandwich, Fruit Salad, Cocoa, Milk, Marshmallow Tapioca	9.84	15.70	5.86	
Tues. Oct. 12..	103	Baked Spaghetti with Cheese, Mashed Potatoes, Lima Beans, Jam Sandwiches, Beet and Egg Salad, Chocolate Pudding with Cakes, Cocoa, Milk..	9.77	8.29		\$1.48
Wed. Oct. 13..	125	Creamed Tuna Fish on Toast, Baked Potatoes, Escalloped Tomatoes, Minced Ham Sandwiches, Banana Salad, Cottage Pudding with Lemon Sauce, Cocoa, Milk	9.93	10.22	.29	

Thursday, October 20, 11



Thursday, October 20, 11



Thursday, October 20, 11

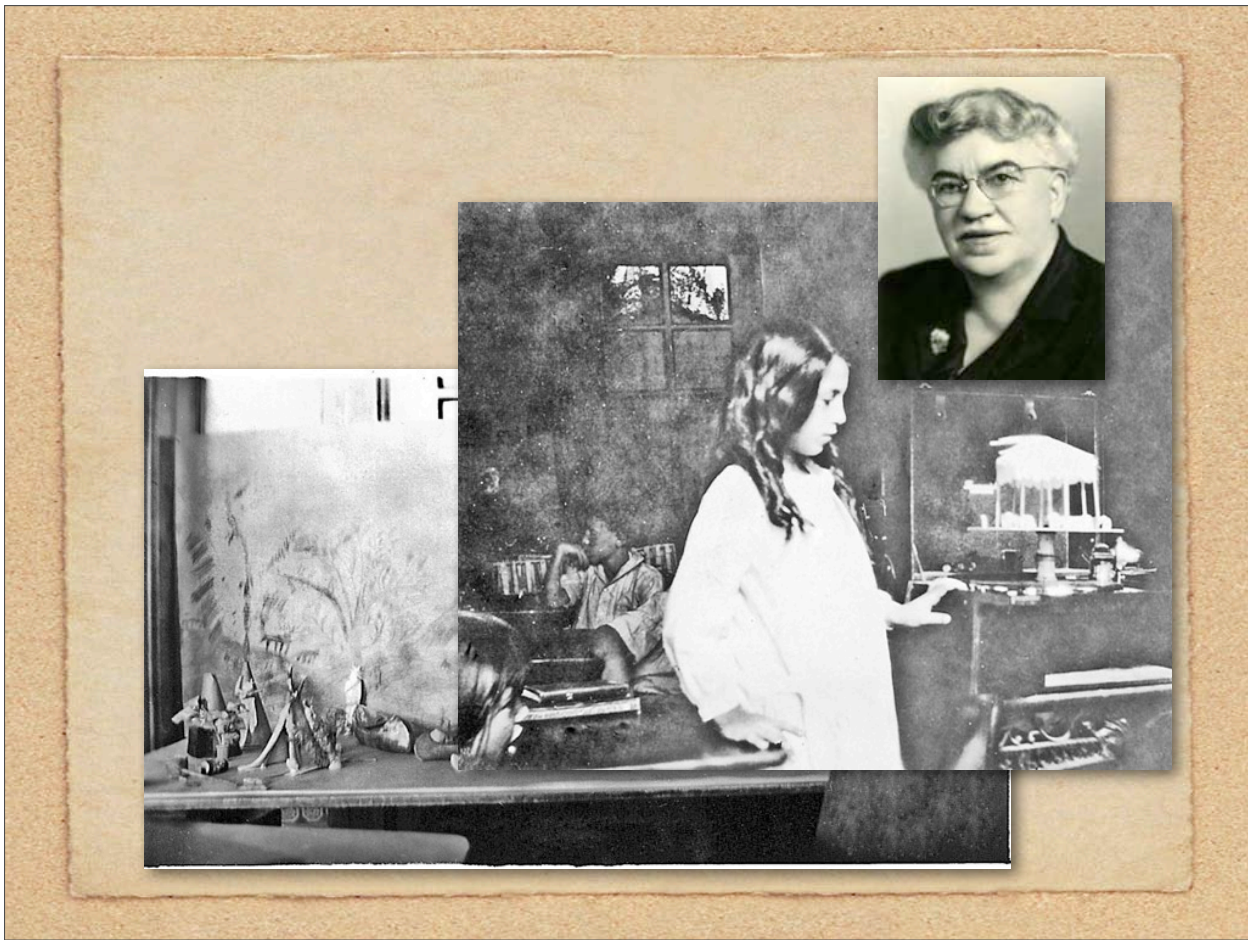
Month of September 1915

25	26	27	28	29	30	31	Total No. of Days	Wages per Day	Amount Paid	Amount Due	Total Amount	RECEIVED PAYMENT	
						20	2.75	55	55	00	55	Lottie Vandervort.	
						"	3.25	65	65	00	65	Belle Durkee	
						"	2.75	55	55	00	55	Bobby Uren	
						"	3.25	65	65	00	65	Rosie Partridge	
						"	3.00	60	60	00	60	Marthana DuMont	
						"	4.00	80	80	00	80	Louise C. Marshall	
						"	4.00	80	80	00	80	Mary Shelan	
						"	3.25	65	65	00	65	Katherine Karg	
						"	3.75	75	75	00	75	Ethel B. Wolcott	
						"	5.56	111.11	111	11	111	11	W. Lusk Miller
						"	7.22	144.44	144	44	144	44	P. G. McPart
						4	5.00	20	20	00	20	00	Helen Mougny
						4	5.00	20	20	00	20	00	W. J. Donaldson
						"	11.11	222.22	222	22	222	22	J. R. Clements
						30	2.00	30	30	00	30	00	Chas. Wupper
						"	1.83	27	27	50	27	50	Martha Smith

Thursday, October 20, 11



Thursday, October 20, 11



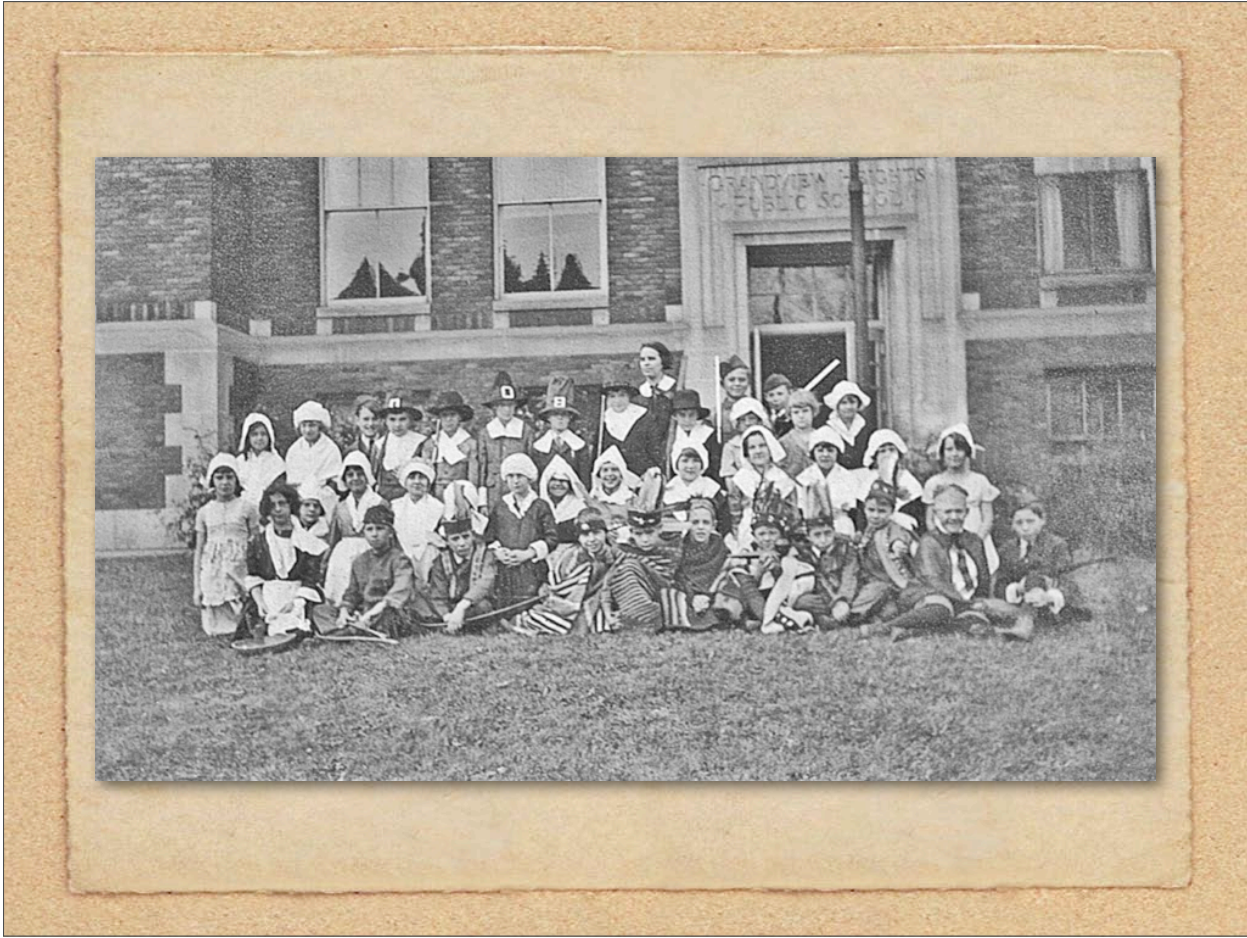
Thursday, October 20, 11



Thursday, October 20, 11



Thursday, October 20, 11



Thursday, October 20, 11



Thursday, October 20, 11



Thursday, October 20, 11



Thursday, October 20, 11

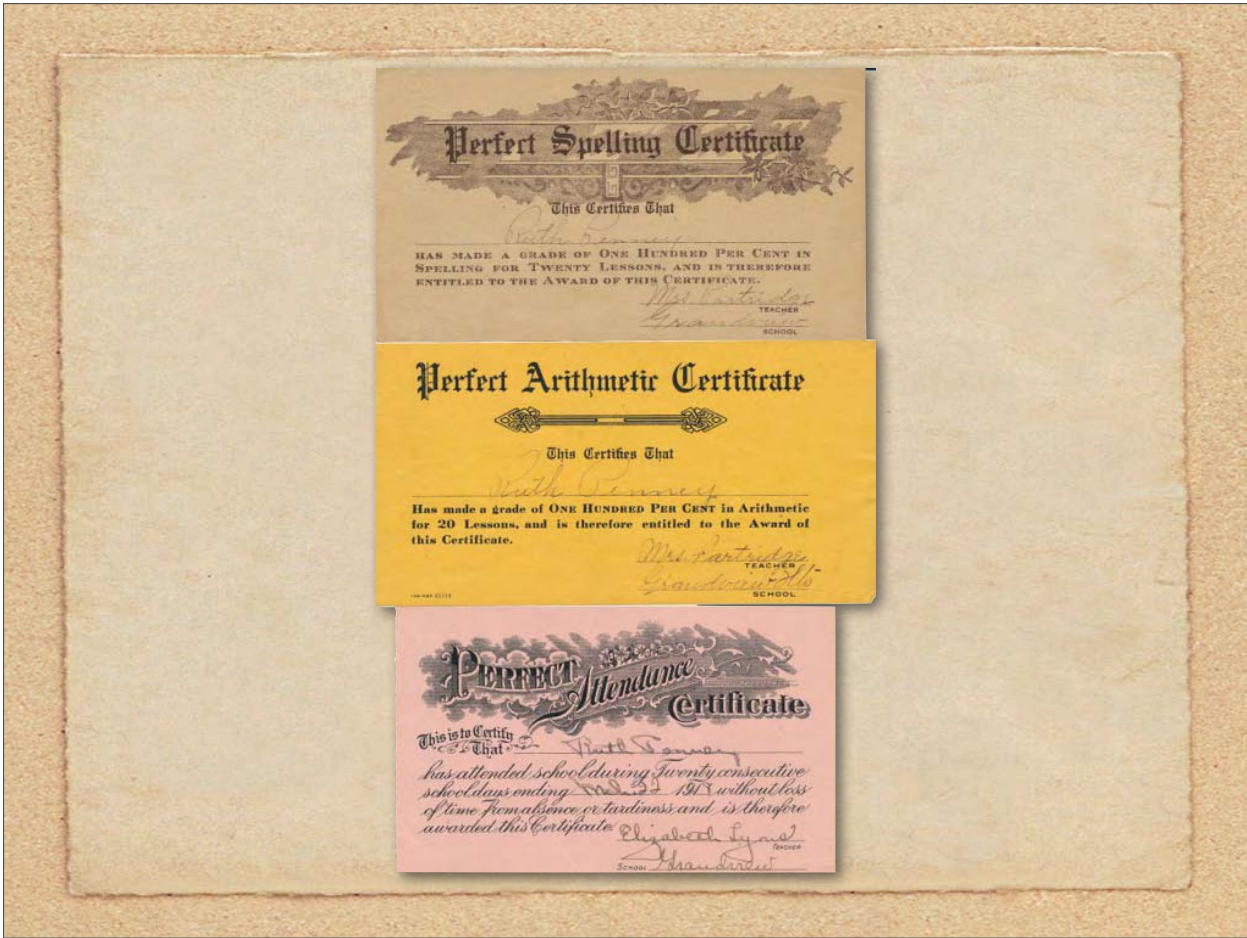
GRANDVIEW HEIGHTS PUBLIC SCHOOL

19 ¹⁵ - 19

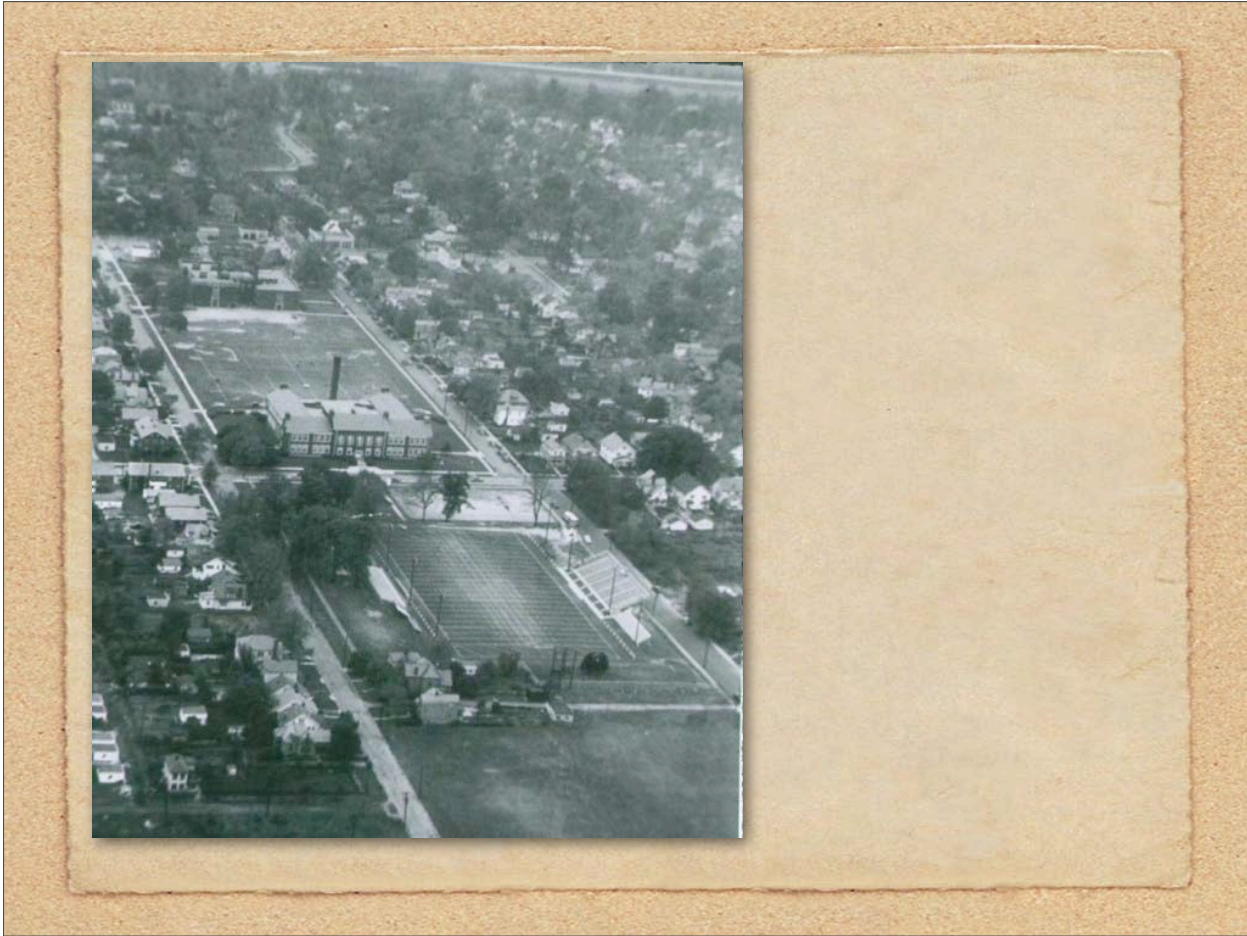
Report of *Allyne Higgs*, Grade *6*, *Thurice Marked* Teacher
Elizabeth M. Malone

STUDIES	Nov.	Jan.	Semester Examination Average	April	June	Semester Examination Average	Yearly Average	Month	Days Present	Unexcused Absence	Unexcused Tardiness	Department	Application	SIGNATURE OF PARENT OR GUARDIAN
Music	90	92	100	94	92	95	96	94	19	0	0	90	90	<i>E. M. Malone</i>
Drawing	88	90		89	90	90	90	90	20	0	0	90	90	
Reading	93	95	95	95	96	96	98	97	20	0	0	95	95	<i>E. M. Malone</i>
Writing	89	90		90	90	88	89	90	20	0	0	95	95	
Spelling	97	96	<i>E. S.</i>	97	98	98	<i>E. S.</i>	98	20	0	0	95	95	<i>E. M. Malone</i>
Arithmetic	90	94	<i>E. S.</i>	92	96	98	<i>E. S.</i>	97	20	0	0	93	95	
Agriculture	90	95	<i>E. S.</i>	93	97	98	<i>E. S.</i>	97	19	0	0	88	95	<i>E. M. Malone</i>
Language	91	98	<i>E. S.</i>	95	98	98	<i>E. S.</i>	98	20	0	0	95	95	
Geography	95	97	<i>E. S.</i>	96	97	97	<i>E. S.</i>	97	20	0	0	95	95	Remarks:
History	94	90	<i>E. S.</i>	92	96	97	<i>E. S.</i>	97	20	0	0	95	95	
Physiology	94	99	<i>E. S.</i>	97	98	98	<i>E. S.</i>	98						
M. T. or Dom. Science	90	94		92	95	95		95						
General Average	92	95		94	97	97		97						

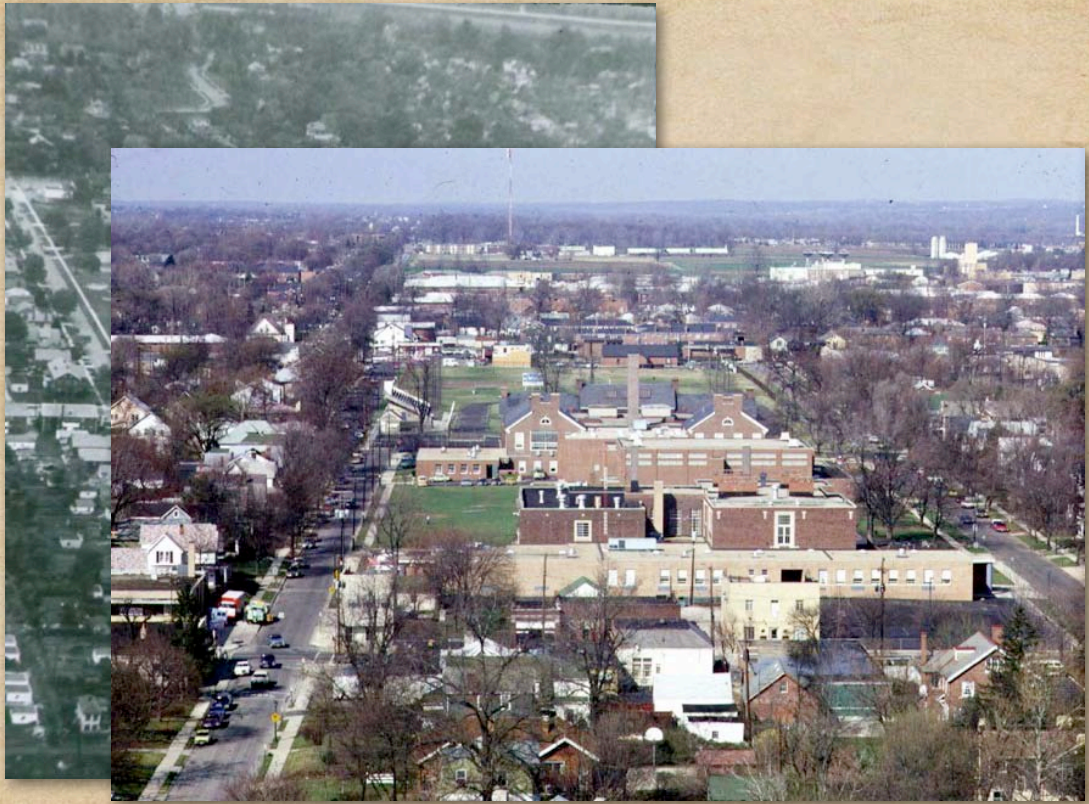
Thursday, October 20, 11



Thursday, October 20, 11



Thursday, October 20, 11

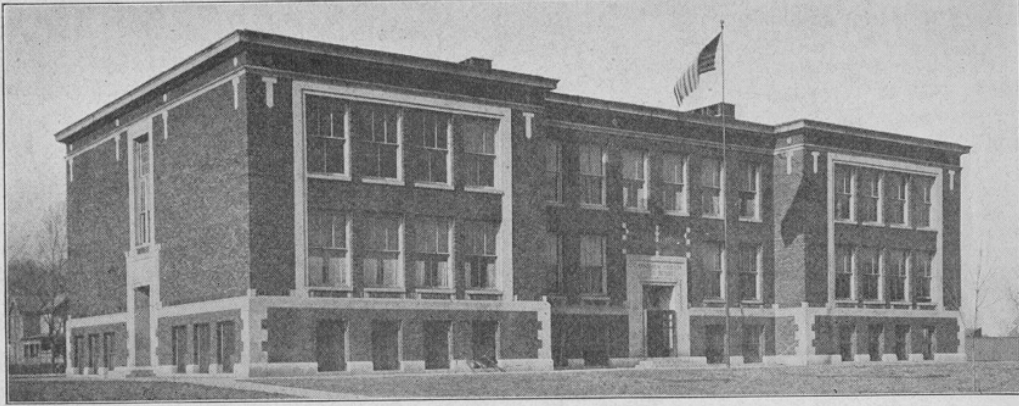


Thursday, October 20, 11



Thursday, October 20, 11

Happy 100th Birthday!



Thursday, October 20, 11