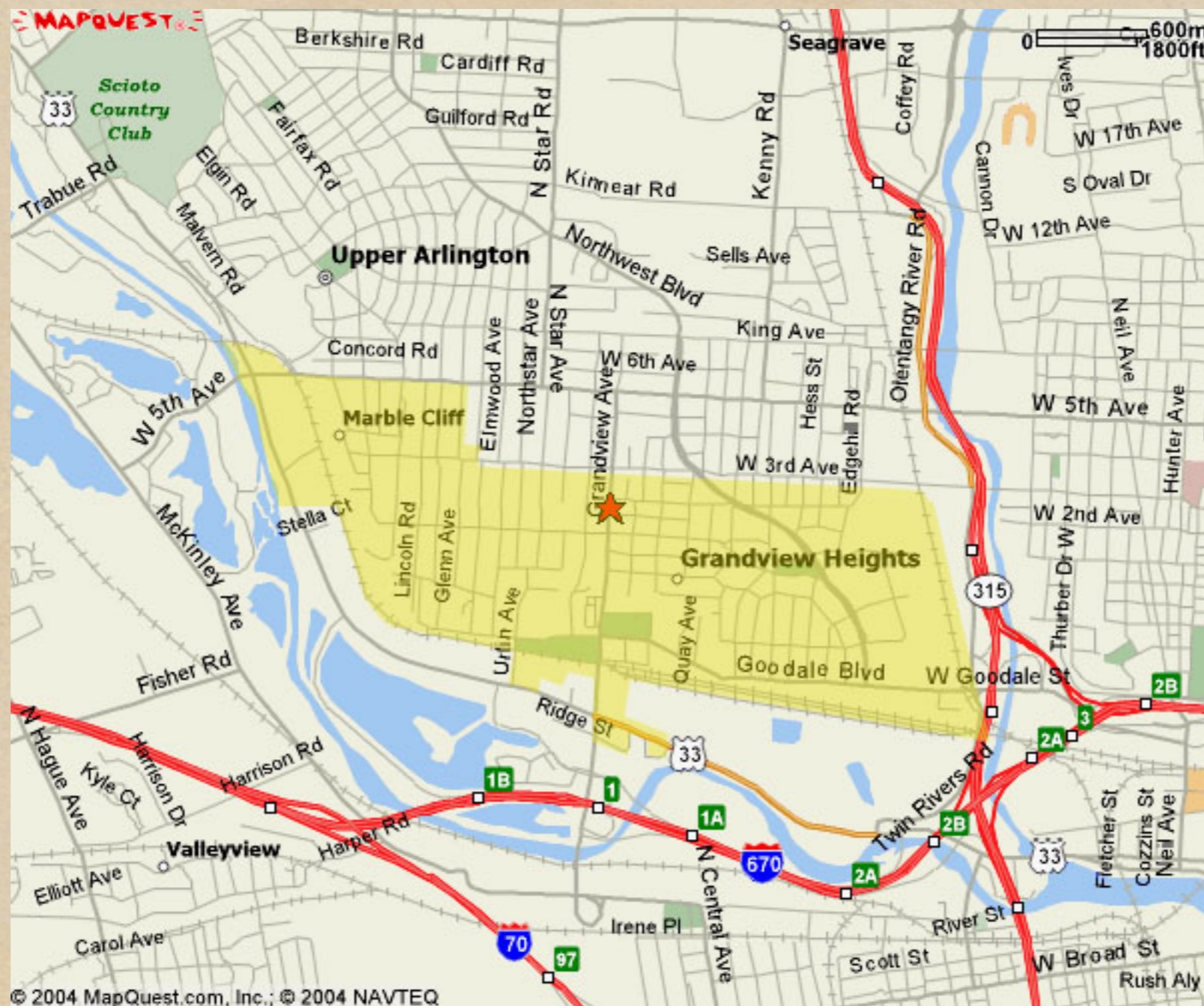


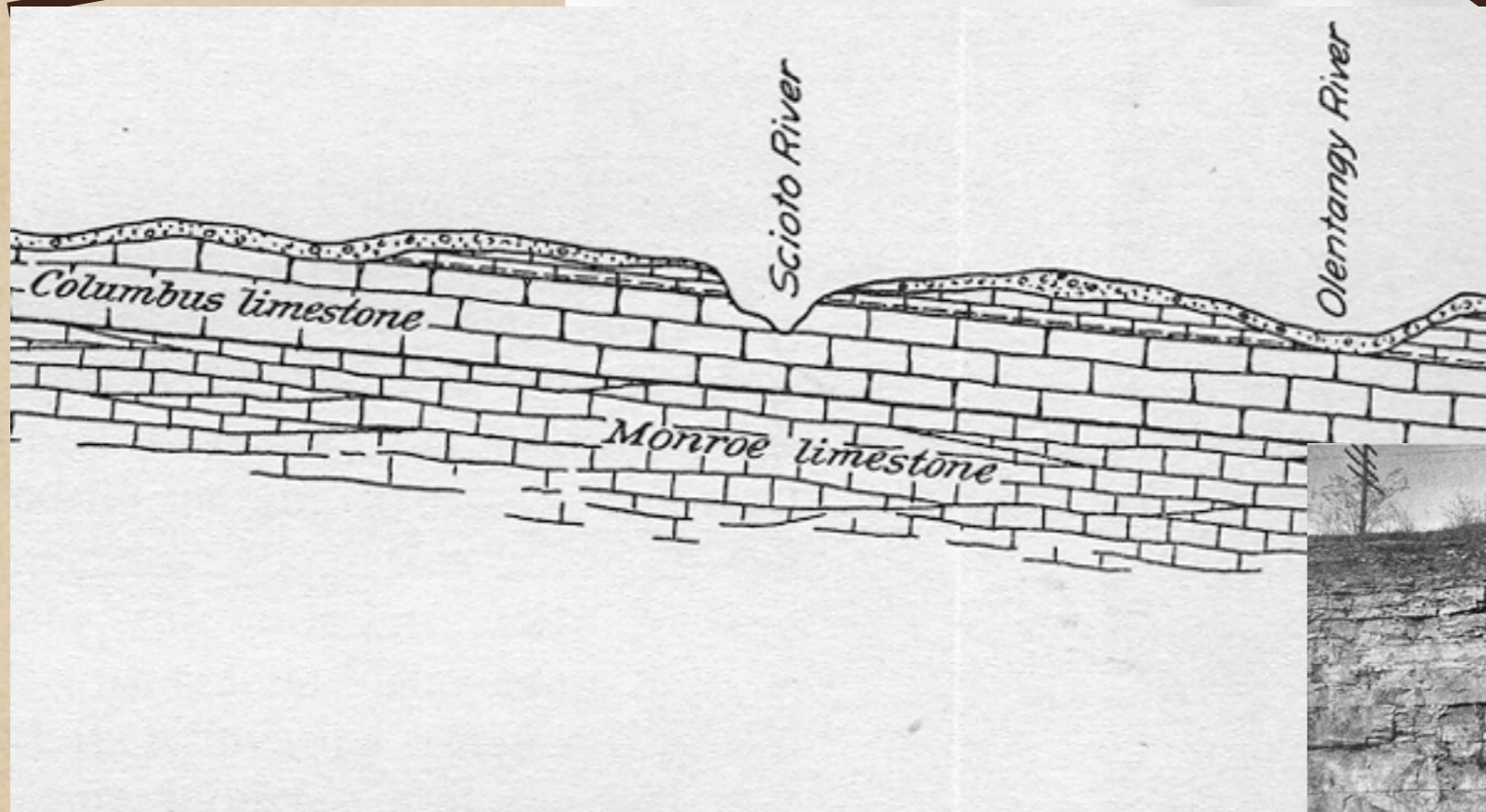
# grandview heights and marble cliff



# geography of region



# geology of region



# early inhabitants

- ◆ adena indians (“mound builders”) - from about 400 bc ->
- ◆ wyandot indians - traded along the scioto trail



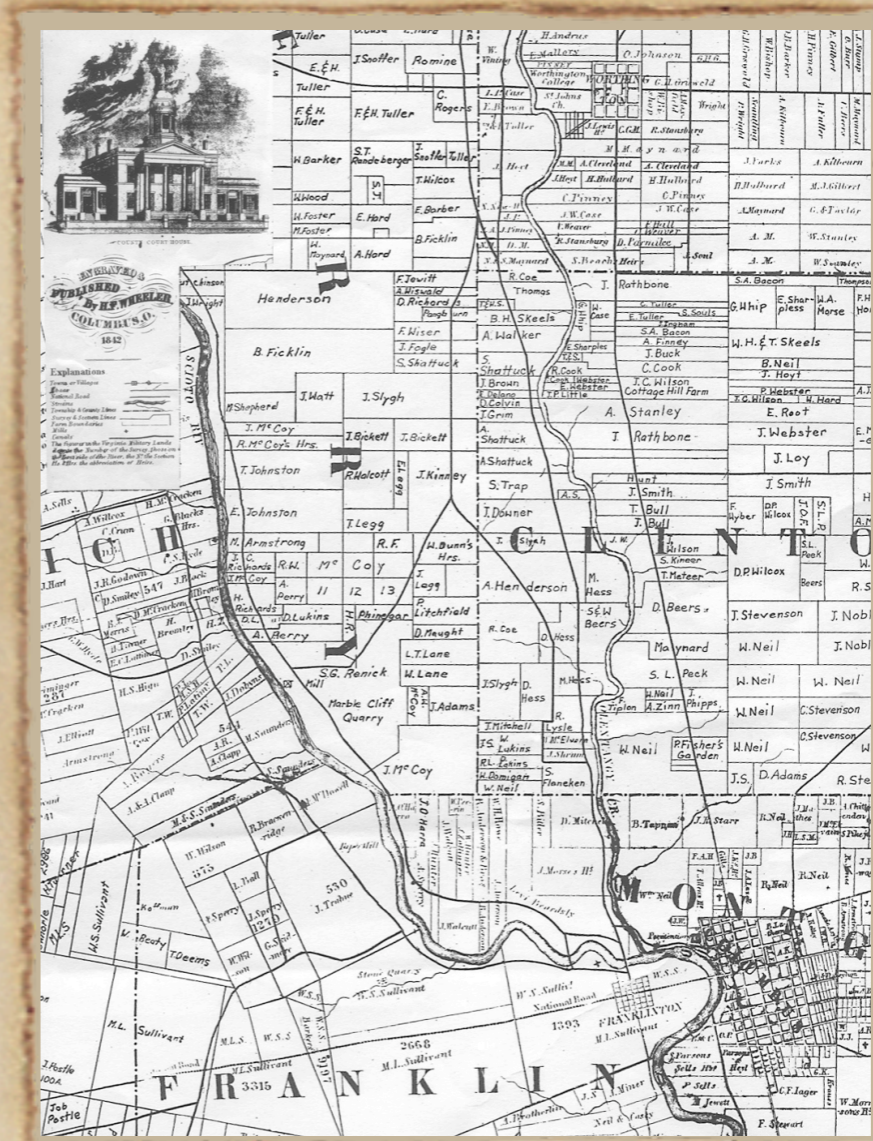
# u.s. gov't land intervention

- ◆ treaty of greenville - 1795
- ◆ refugee tract - 1798
  - ◆ 60,000 acres
- ◆ virginia military district  
1798-1832
  - ◆ metes and bounds
  - ◆ given to state for osu



# early settlers

- ◆ organized as townships
- ◆ grandview and marble cliff in franklin township
- ◆ Franklin County Poor Farm built in 1832
- ◆ 1842 - 12 plots in grandview, 4 more in marble cliff





1842 land ownership

# around 1875

- ◆ dublin pike followed the scioto trail from downtown to dublin; 5th avenue served as the main road west



- ◆ area consisted of a few farms, grazing land & woodland

- ◆ miller farm
- ◆ walcutt farm
- ◆ salzgaber farm ->
- ◆ willard farm
- ◆ thomas farm

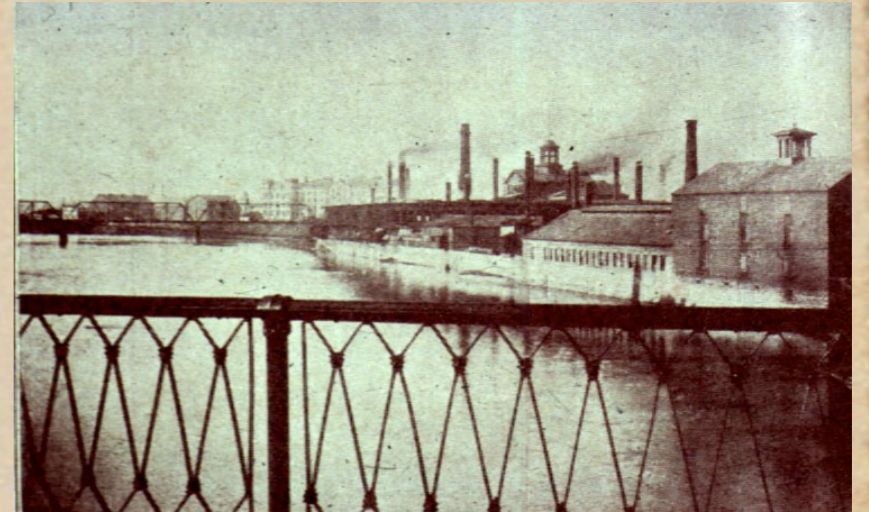


trivillage studio  
1st & grandview



# summer residents

- ◆ with industry downtown came heat & smog - wealthy residents looked for summer retreats
- ◆ several homes built in bluff area near westwood and glenn - 1880s
- ◆ pennsylvania railroad had flag stop at grandview near goodale (napa store)



# urlin vision for grandview

- ◆ george urlin, john tiltin, fred crougten & edward denmead bought tracts of land from walcutt & others on the hill
- ◆ urlin envisioned a community on the bluffs overlooking downtown
- ◆ he and his colleagues laid out the early streets of what would ultimately become grandview heights

# urlin's mansion - 1889



mrs. urlin reportedly  
exclaimed "what a  
grand view!"



# first "community" - 1890

- ◆ franklin township (walcutt) school at dublin pike and grandview ave. (bp)
- ◆ methodist church at 5th & grandview - (giant eagle)
- ◆ first grocery - mericle bros. grocery (rifes)

# harding school - 1895



# grandview development

- ◆ goodale blvd. completed from columbus to the bluffs - 1896



# arlington (marble cliff)

- ◆ homes developed here (1893-1895)  
included those of sylvio casparis, john price, timothy price, charles griswold



# marble cliff quarries



- ◆ sold by price family to sylvio casparis in 1892
- ◆ staffed by italian immigrants



# scioto depot - 1896



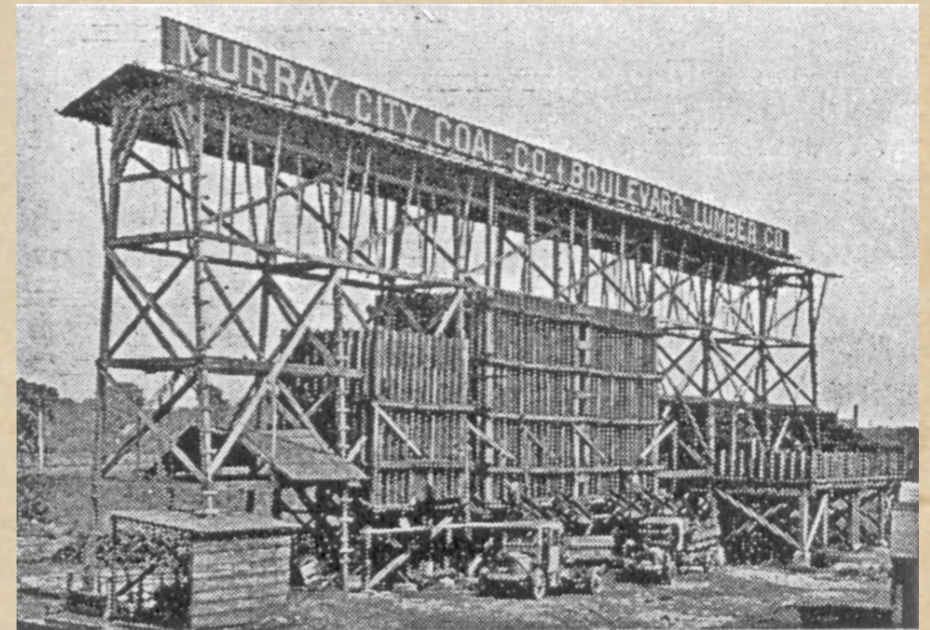
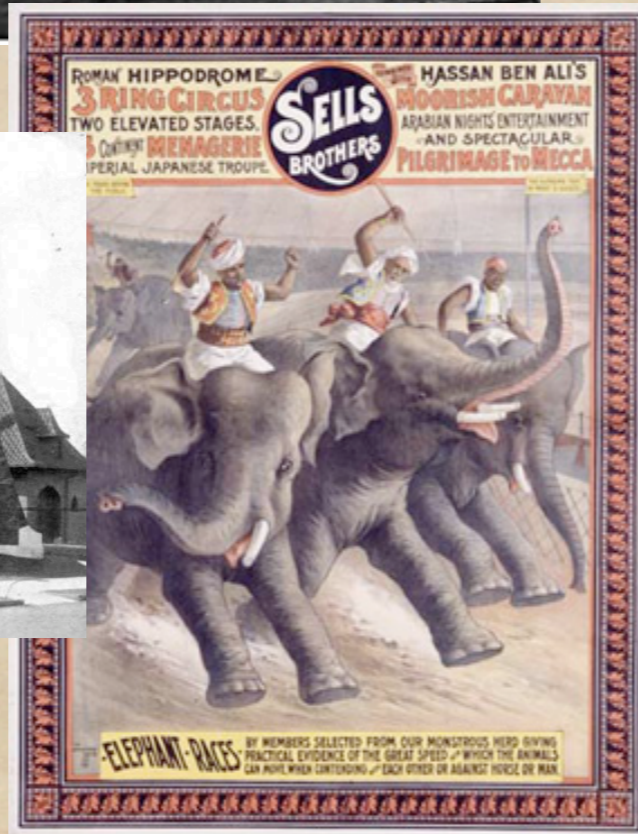
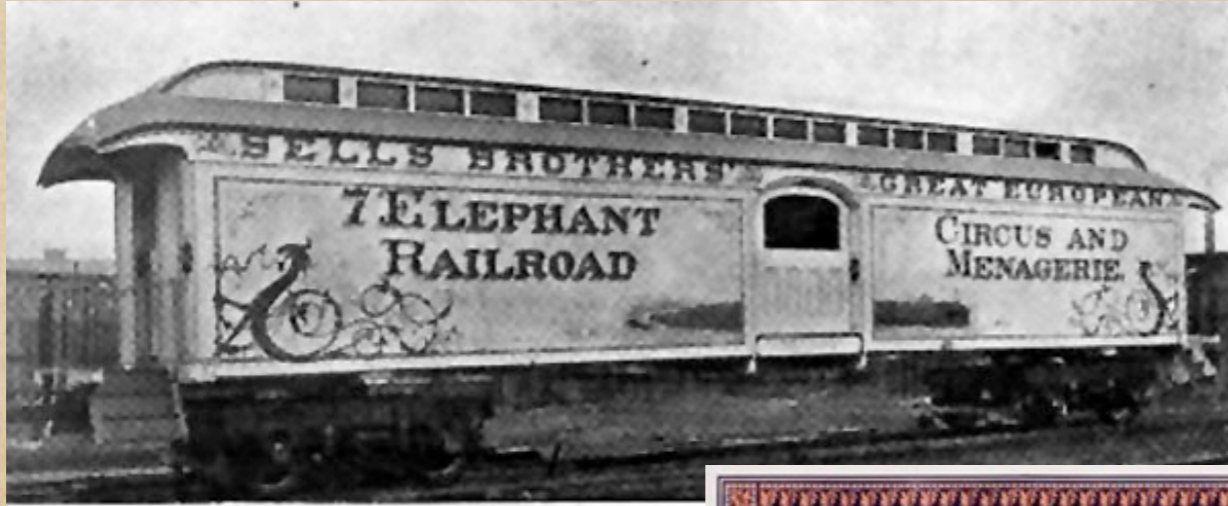
# arlington country club

- ◆ the bit and bridle club used urlin's farm house as a riding headquarters
- ◆ as their membership increased they started a new club... the arlington golf and riding club
- ◆ in 1895 a large clubhouse was designed by frank packard, the arlington country club (located at west edge of hamlet)

# arlington country club



# the other end of 5th



# rail transportation

<- 1901: streetcars - downtown  
to goodale;  
up broadview hill to first ave; to  
cambridge blvd. to 5th



1903: interurban -  
downtown to dublin pike ->  
to fishinger rd



# arlington place



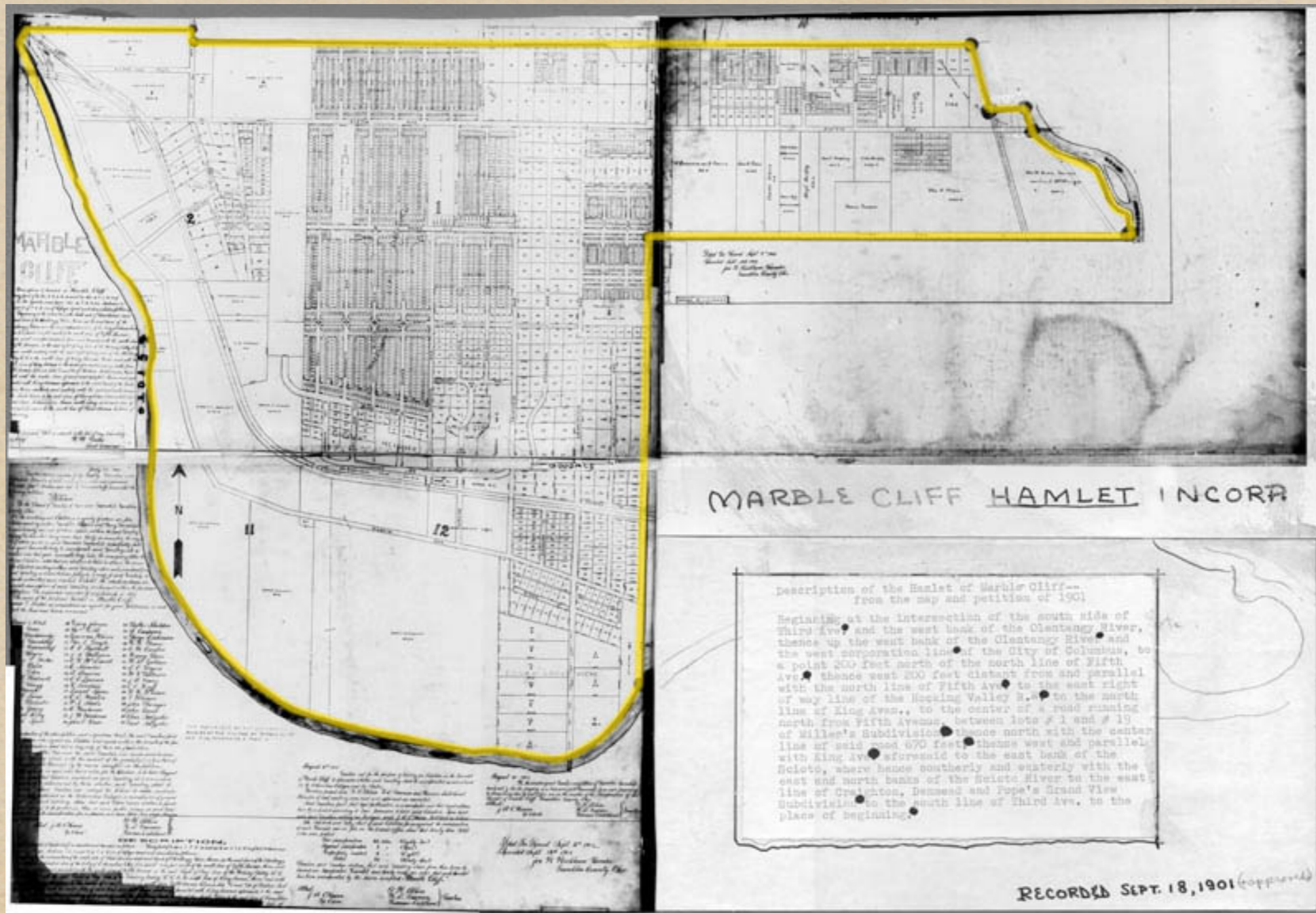
# arlington place







# hamlet of marble cliff



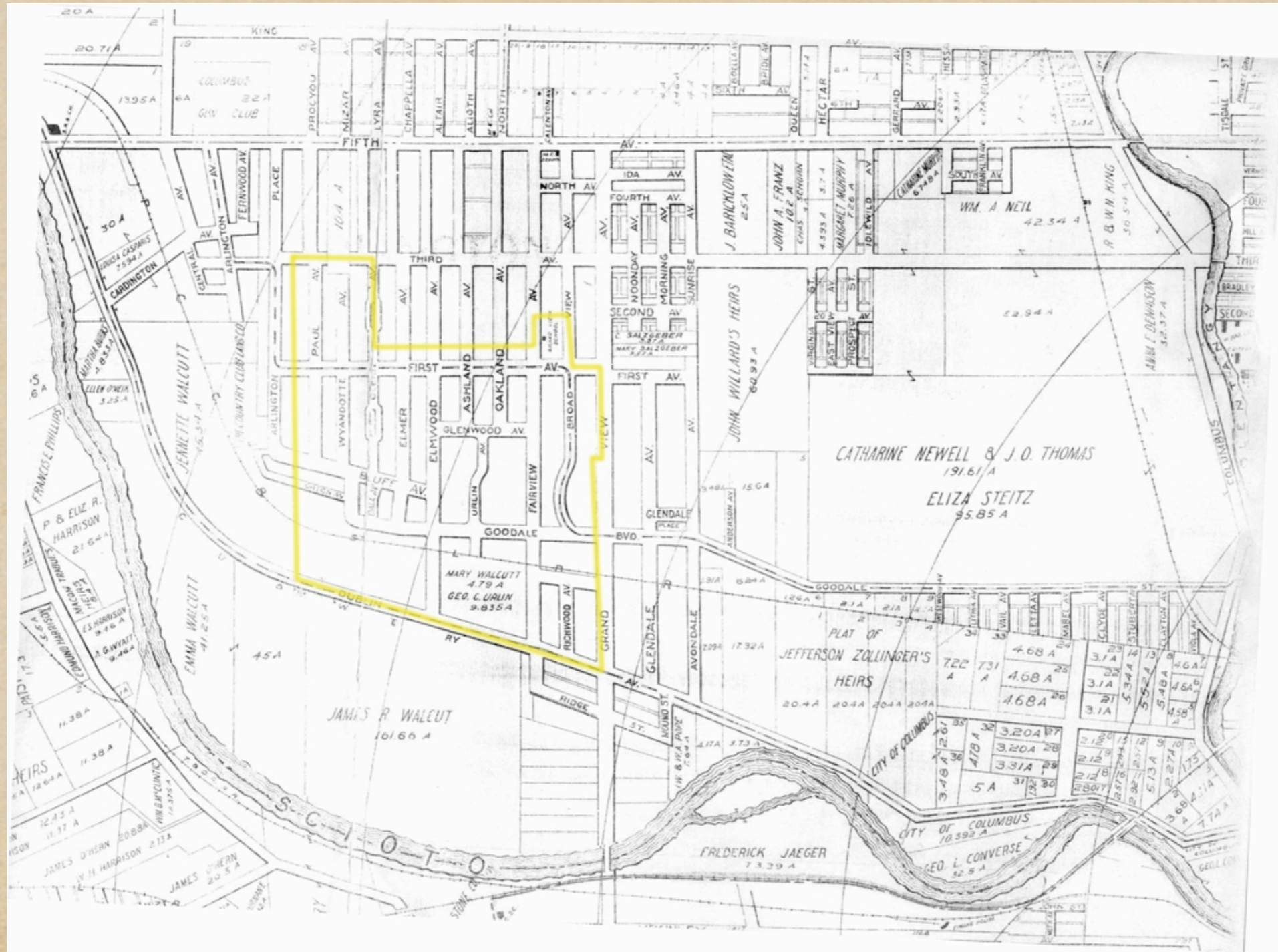
# north vs. south

- ◆ the mayor of marble cliff was j.s. rickets, a minister who despised alcohol
- ◆ he fined revelers, including the locals and visitors to the country club
- ◆ in 1903 the south part of marble cliff, together with grandview, voted to secede from the hamlet... the north section reverted to a village

# grandview incorporation

- ◆ throughout 1904 and 1905 there were discussions of annexation to columbus
- ◆ the now 200 residents asked for water and electric but were denied
- ◆ as a result they voted to become incorporated as the village of grandview heights - 1906

# grandview incorporation



# first actions

- ◆ certificate of indebtedness (\$600) - 1906
- ◆ road improvement, sidewalks
- ◆ first tax millage (7 mils each for city and schools) - late 1906
- ◆ ohio fuel & gas ran lines in...central union  
telegraph ran telephone lines
- ◆ 8" sewer line - 1907
- ◆ fire carriage; village marshal - 1907

# village of marble cliff

- ◆ after grandview incorporated, the north and south regions of the old hamlet feared annexation to columbus, so they recombined and incorporated in 1908
- ◆ it was first called arlington heights
- ◆ changed to marble cliff because of name conflict with southern ohio town

# southern development

- ◆ the new trolley service and the completion of goodale encouraged development in southern marble cliff
  - ◆ lindenbergs
    - ◆ country club subdivision
    - ◆ hoster, butterworth, jaeger, griffith, ...





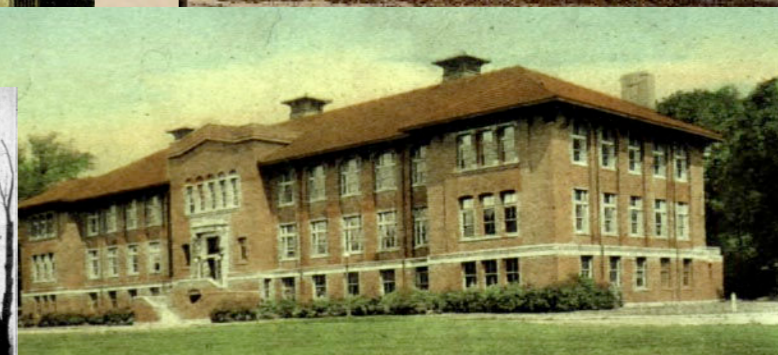
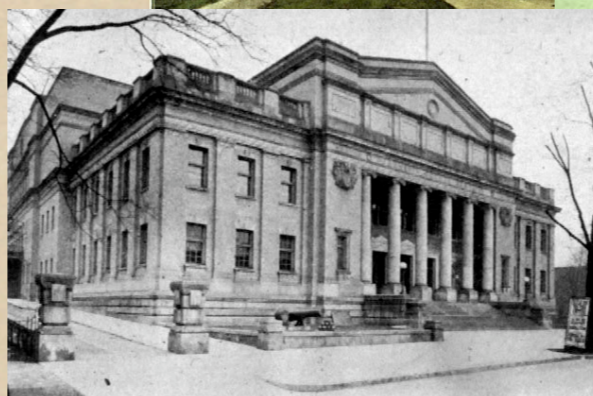
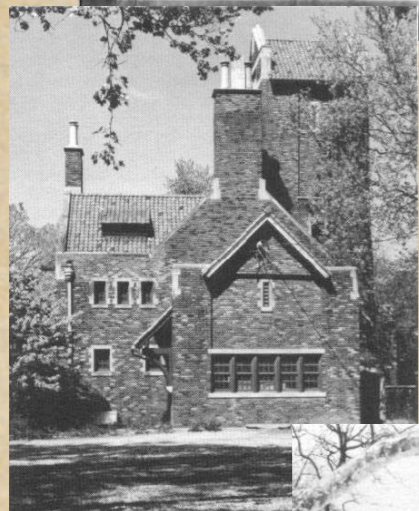
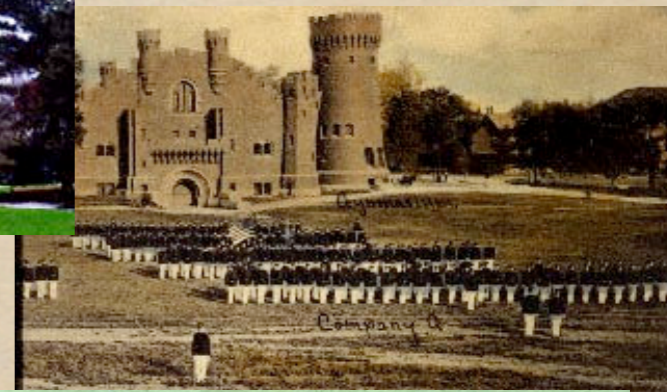
# lindenberg homes



# theodore lindenber



# frank packard



1910 - 490 residents

truck farms along  
grandview  
avenue



community church  
first and paul

# 1911 - city improvements

- ◆ east wing of edison built

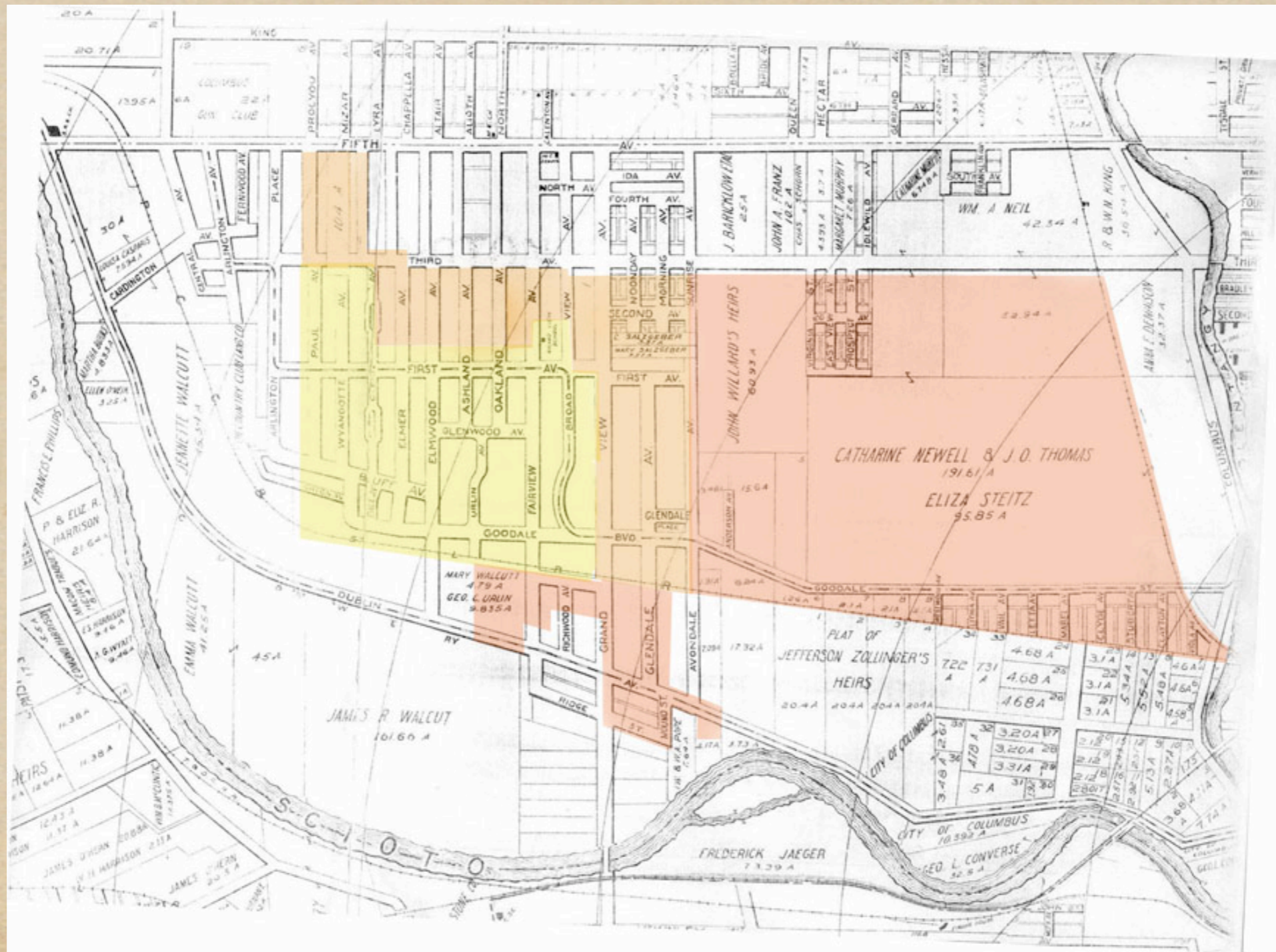
- ◆ first mayor



- ◆ street improvements... macadamized

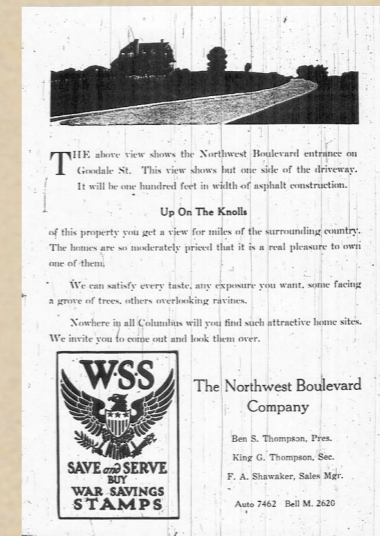
- ◆ water/sewer agreement with columbus  
10% above columbus rates, 75¢ per capita

# annexations



# “upper” arlington

- ◆ roxbury road extended from marble cliff north to miller farm - 1914
- ◆ northwest boulevard co.
  - ◆ king & ben thompson
- ◆ ua authorized to develop as a “planned” city;  
6 houses built - 1915
- ◆ camp willis - 1916
- ◆ ua incorporated - 1918



# 1915

- ◆ marble cliff dissolves schools...  
one year later merged with grandview

- ◆ brotherhood  
of the rooks

->



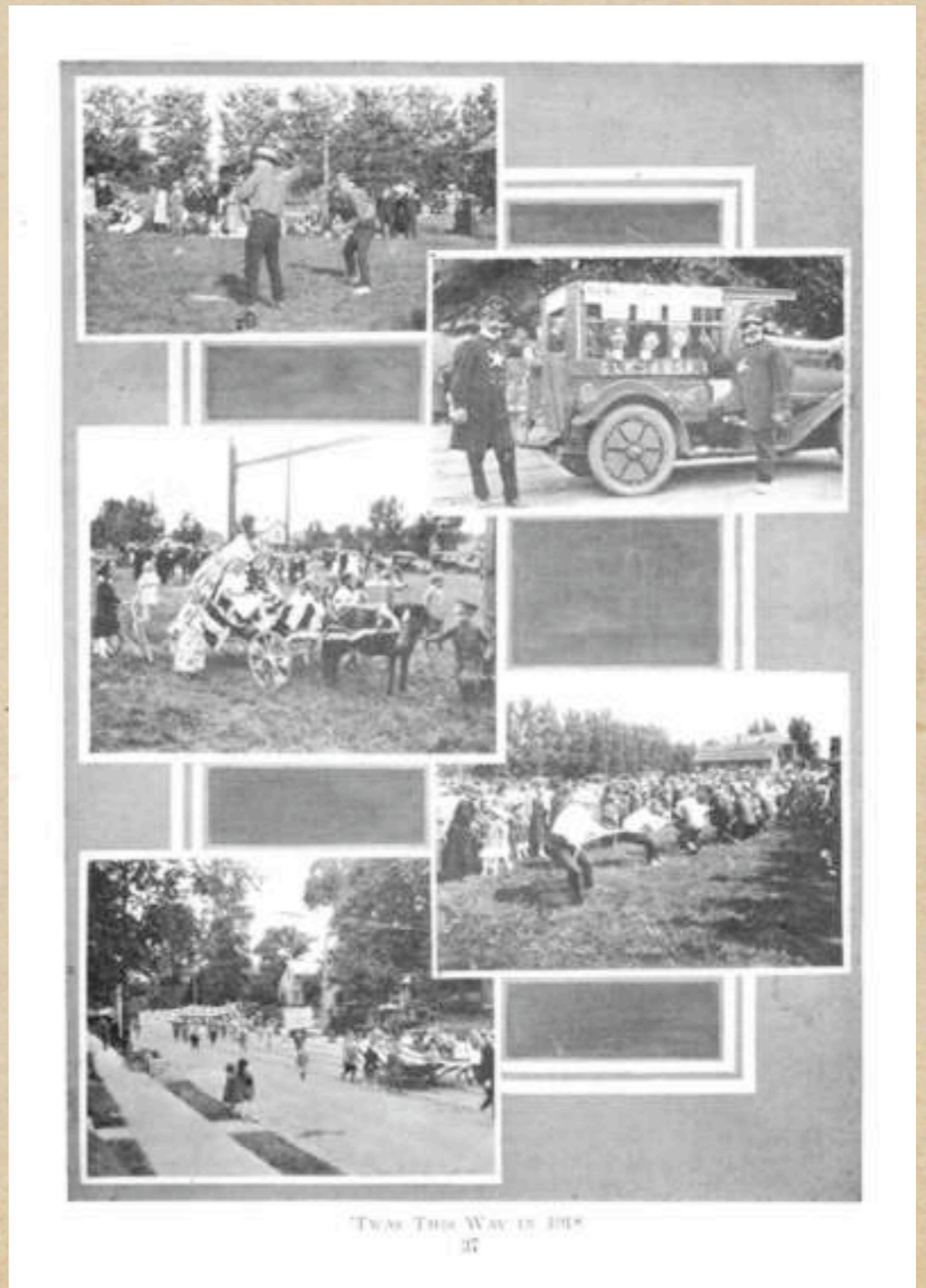
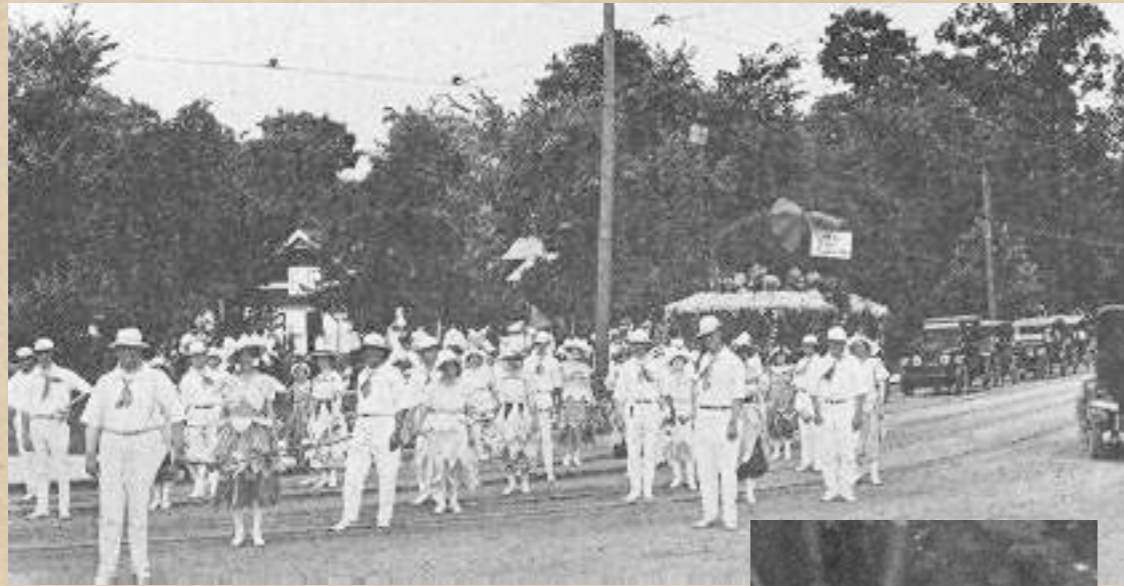
- ◆ first avenue  
extended east

->

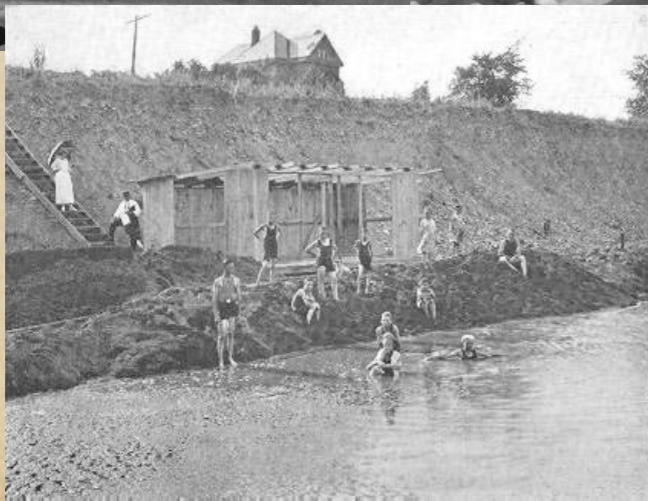
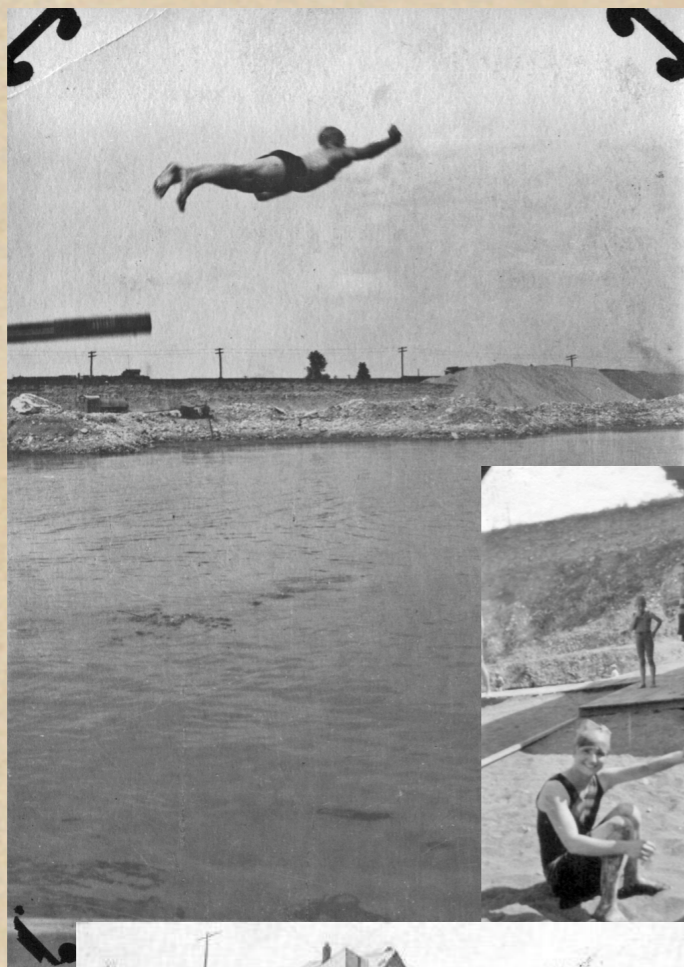




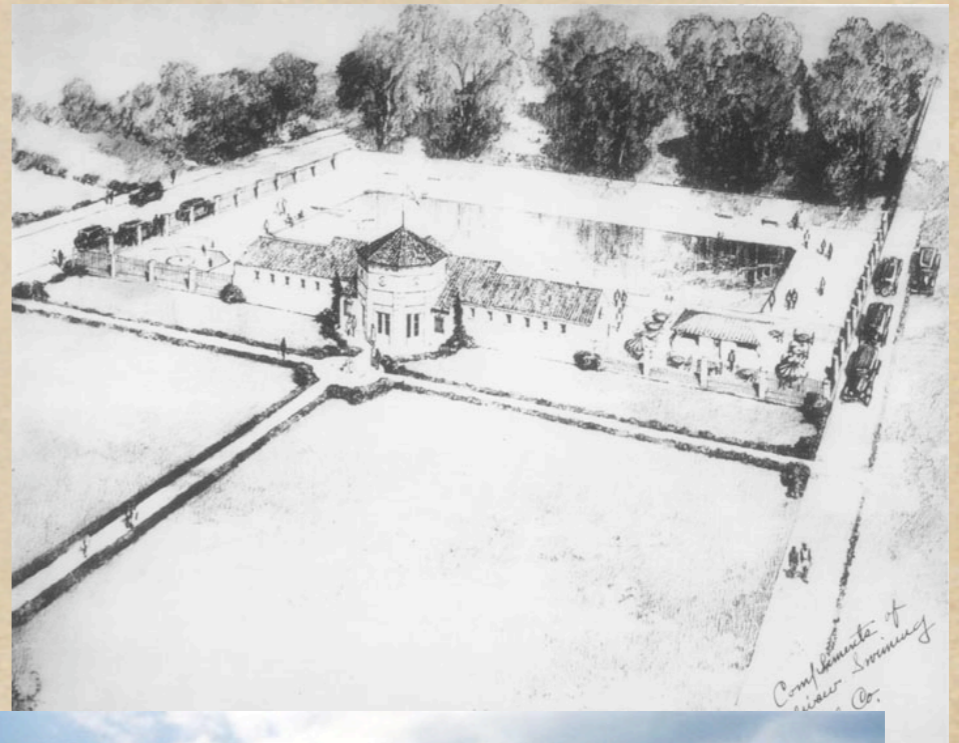
# june field days



# swimming



1932 ->



<- 1920

# new buildings



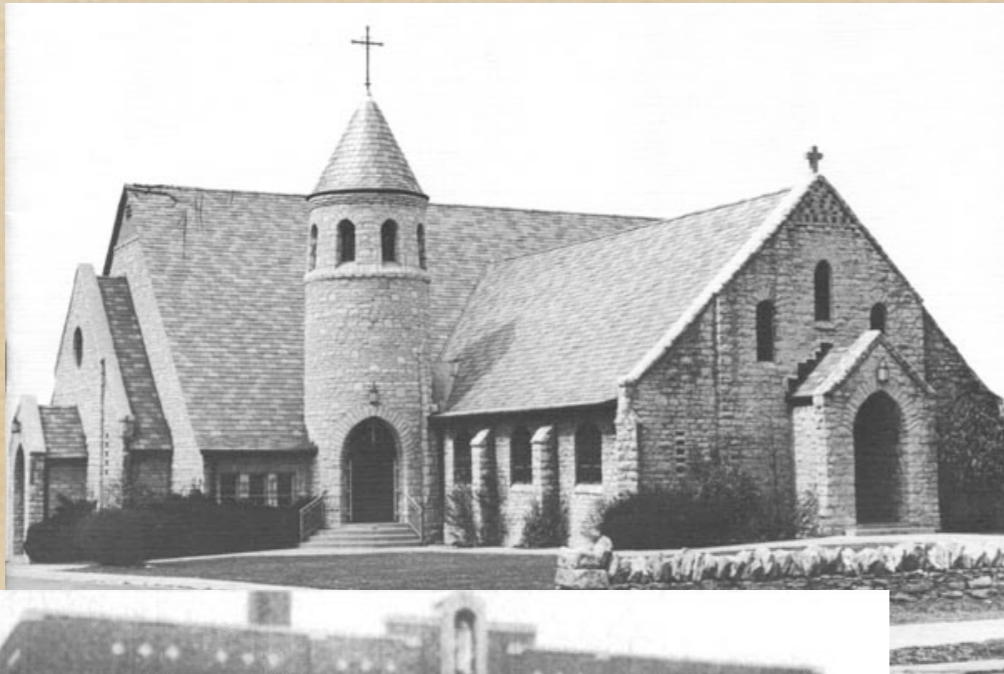
<- 1922



1924 ->



# new buildings



<- 1923



<- 1925



<- 1930



1926 ->

# the bank block



1928-1930



# the city of grandview hts

- ◆ 1905 - 200 residents (45 in marble cliff)
- ◆ 1920 - 1795 residents (216 in marble cliff)
- ◆ 1931 - 5000 residents
  - ◆ secretary of state declares grandview heights a city
- ◆ 1940 - 6960 residents
- ◆ 1980 - 8000+ residents (now at ~6700)

# other key dates

- ◆ 1934 - wpa - street improvements; northwest boulevard; ghhs stadium
- ◆ 1936 - streetcar line abandoned
- ◆ 1936 - grandview heights voted dry
- ◆ 1940 - underpass on goodale at big bear headquarters
- ◆ 1945 goodale rezoned commercial

# other key dates

- ◆ 1948 - kindergarten annex built on harding site



- ◆ 1948 -annexation of dublin road from gv ave. to river failed - negotiations left it part of school district



- ◆ 1965 - summit chase condominiums built on urlin home site
- ◆ 2001 - marble cliff buys tarpy woods



# demographics

- ◆ size: 1.4 sq. mi. (mc 0.2 sq.mi.)
- ◆ population: 6695 (mc 646)
- ◆ housing units: 3034 (mc 303)
  - ◆ 1497 are pre-1939
- ◆ families: 1742 (mc 139)
- ◆ school district: 1503 students
  - ◆ 444 in high school

2000 census